

# Charleston County's Compost Program



Christina Moskos  
Recycling Coordinator  
Charleston County Environmental Management

# Bees Ferry Compost Facility (Type II)





# Feedstocks

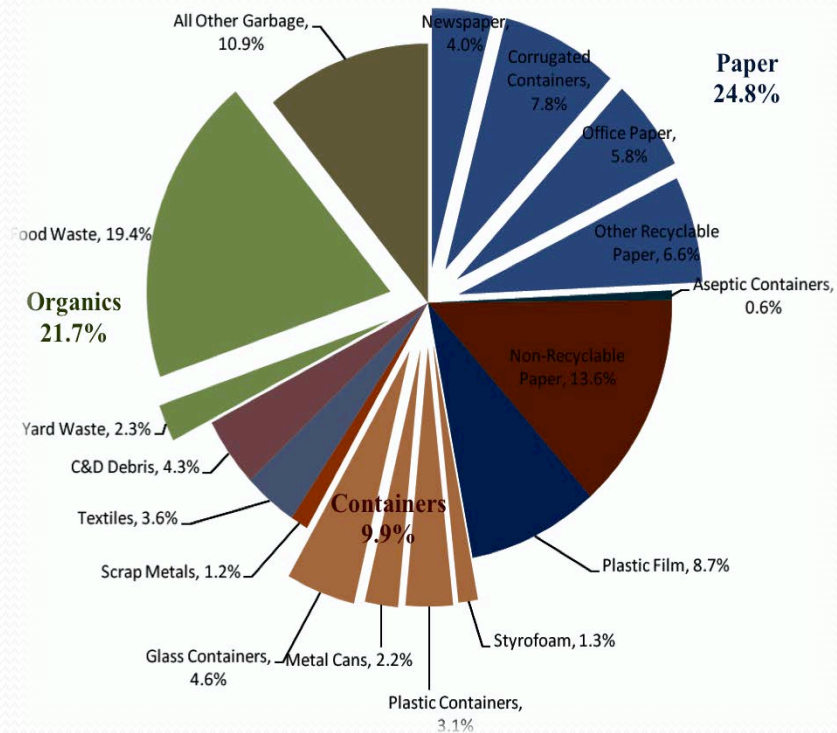


Yard Debris



Pre- and Post-Consumer  
Food Waste

# How did food waste program get started?

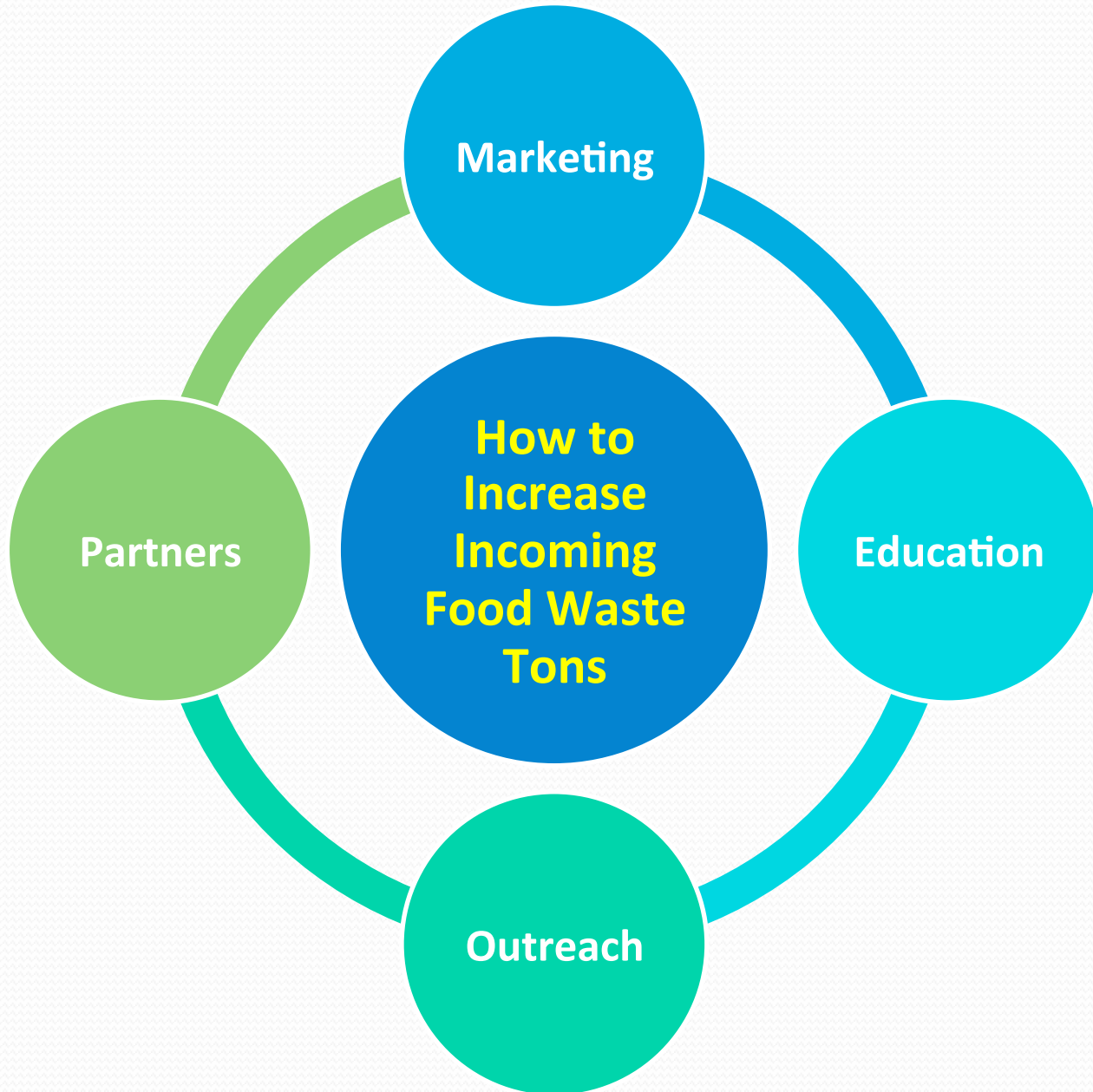


- 2009 – 2010 Waste Composition Study finds 21.7% waste is organics; food waste is 19.4%
- County proposed a 12 month food waste composting demonstration pilot

# Pilot to a Permanent Program



- **Sept 2010:** DHEC approved first Food Waste Composting Pilot Demonstration in SC
- **June 2012:** DHEC approved food waste program to become a permanent program and process up to **1,000 tons per week.**
- At the time, we were processing only **120 tons per month.**





# Partnerships



# Charleston > excellence is our standard County SCHOOL DISTRICT





# Education

**ACCEPTABLE FOOD WASTE MATERIALS**

 All fruits	 All vegetables	 Bread, dough, bakery items, pasta and grains	 Coffee grounds and tea with filters	 Dairy products (milk, cheese, yogurt)
 Processed foods (pizza, cereal, chips, crackers, cookies, cakes, cooked meat, plate scrapings)	 Eggs and egg shells	 Consumable liquids	 Cooked meats and fish, including shells and bones, wooden skewers and wooden cocktail sticks	 Food soiled paper: paper bags, paper towels, and paper napkins; and waxed cardboard boxes

**ITEMS NOT ACCEPTED**

 No raw meat products (beef, poultry, pork, seafood)	 No plastic bags, serve ware, utensils, twist ties, rubber bands	 No fats, oils, grease or non consumable liquids (vegetable oil or lard)	 No wood, metal, glass or other non food items
--	--	--	--

Accepted vs. Not Accepted Food Waste Flyer.pub Charleston County Environmental Management

- Acceptable vs. Not Acceptable Items Flyer
- Website page includes links to additional resources
- FAQs
- Signage

**GARBAGE ONLY**

Examples: chip bags, ziploc bags, saran wrap, foil packaging, plastic utensils, rubber bands, twist ties, sponges, rubber gloves





NO FOOD WASTE  
NO RECYCLABLES



**COMPOSTING ONLY**

food scraps, napkins, waxy cardboard boxes, coffee & tea filters, cut floral, compostable serveware





NO PLASTIC, METAL, WOOD OR RAW MEAT



**RECYCLING ONLY**

ALL CONTAINERS  
plastics #1-7, glass, aluminium & steel cans



Please empty and rinse. Caps may remain on.



NO FOOD WASTE  
NO GARBAGE



# Marketing



**40%**  
of **FOOD** goes uneaten. Source: NRDC

**RESTAURANTS | GROCERS**  
**RECYCLE FOOD WASTE**

**OWNERS & MANAGERS**  
**CALL (843) 720-7111**  
for food waste collection info

**Why landfill your food waste, when we can compost it for you?**  
Charleston County Food Waste Collection Partners now provide food waste pickup to area restaurants and grocers for a fee. For more information, call or visit our website.

**RECYCLE.CHARLESTONCOUNTY.ORG**

farm to table to compost



*I'll have fish bones with a rotten lemon aioli please.*

**RECYCLE FOOD SCRAPS.**  
**RESTAURANTS | GROCERS**

**CALL (843) 720-7111**

**CHARLESTON COUNTY NOW PARTNERS WITH FOOD WASTE COLLECTORS TO PICK UP YOUR PRE- AND POST-CONSUMER FOOD WASTE. LET US COMPOST YOUR FOOD WASTE AND SAVE OUR VALUABLE LANDFILL SPACE. CALL 720-7111 FOR SERVICE FEES AND OPTIONS.**

**RECYCLE.CHARLESTONCOUNTY.ORG**

farm to table to compost

- Press Releases
- Updated Dept Website
- Program Flyer
- Direct Mail to all Charleston restaurants
- Print & Radio Advertisements
- Promoted the sale of finished compost at Bees Ferry
  - ✓ \$2/bag (1.5 cubic ft.)
  - ✓ \$10/ton



**Pre- & Post-Consumer Food Waste**

**Commercial Food Waste Composting Is Here!**

**Join the Program!**

**How does it work?**  
Participating restaurants place their food and other acceptable waste in special marked collection containers located throughout the kitchen and food prep areas. Charleston County's food waste collection companies provide collection of your organic waste. Charleston County receives and processes incoming food waste and ensures quality of the finished compost product and markets the material.

**How do I get started?**  
Go online to obtain a list of collection companies: [recycle.charlestoncounty.org](http://recycle.charlestoncounty.org) or contact Environmental Management at **(843) 720-7111** for more information.

**COMPOST**

**Charleston County Environmental Management**



# Join Charleston County's Farm to Table to Compost Movement

Restaurants can reduce disposal costs and their impact on our environment by composting food waste.

Residents and farmers can close the loop by purchasing the compost.



## How do I start composting?

Charleston County Environmental Management does not collect or haul food waste, but has collection partners listed below. For fees and service options, you should contact each hauler directly.

**Food Waste Disposal**  
(843) 991-2791  
wastefwd.com

**Carolina Waste Services**  
(843) 576-1100  
carolinawaste.com

**Smart Recycling**  
(843) 834-7681  
smartrecyclingsc.com

**Fisher Recycling**  
(843) 554-6099  
fisherrecycling.com

**Republic Services**  
(843) 266-6199  
republicservices.com



(843) 720-7111 • [recycle.charlestoncounty.org](http://recycle.charlestoncounty.org)



## What can I compost?

- Food preparation scraps and plate scrapings
- Food-soiled paper, such as: paper towels, paper napkins, waxed cardboard boxes and paper bags
- Cooked meats and fish, including shells and bones
- Egg and dairy products
- Fruits and vegetables
- Bread, dough, bakery items, pasta and grains
- Coffee grounds, coffee filters and tea bags
- Consumable liquids
- Wooden skewers and cocktail sticks





**RECYCLING FOOD SCRAPS  
IS EASY, SUSTAINABLE & CAN  
SAVE YOUR BUSINESS MONEY.**



**SUPPORT BUSINESSES  
THAT COMPOST.**



**COMPOST PREP WASTE • PLATE WASTE  
WAXY CARDBOARD • FLORAL • SOILED  
PAPER • COMPOSTABLE SERVE WARE**



**RECYCLE.CHARLESTONCOUNTY.ORG  
(843) 720-7111**

**FEED YOUR SOIL.  
USE COMPOST.**



**Charleston County  
Compost**



**COMPOST ADDS  
ORGANIC MATTER  
FOR SOIL HEALTH**



**ONLY \$10 LOOSE TON  
\$5 YARD, \$2 BAG  
25¢ 5-GAL. BUCKET**

**Bees Ferry Compost Facility  
recycle.charlestoncounty.org  
843.720.7111**

# Outreach

- Special Events
- Hauler training workshops
- On-site technical support for generators
  - Container sizing education
  - Employee training
  - Acceptable materials



# Additional Measures



- Personal selling
- Cold calling/visiting
- Email correspondence
- Letters of introduction to corporate offices
- Follow up phone calls/visits
- Video with testimonial from a General Manager at a participating restaurant





 **FOOD**    
**WASTE RECYCLING**

# Finished Compost

**Bulk Compost Only \$10 Per Ton  
Large Quantites Available Now**

Premium Commercial Grade Compost Processed from  
Yard Debris and Commerical Food Waste

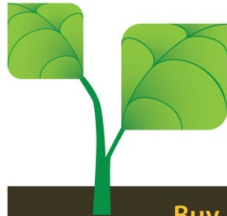


**US Composting Council**  
Seal of Testing Assurance®



Lab results available upon request.

Charleston County's compost has been deemed suitable for use in organic farming by Clemson University. Currently, Charleston County is the only producer in SC to have this certification.



## Benefits & Uses:

- Erosion Control • Soil Amendment • Encourages Root Growth • Reduced Soil Compaction • Increased Nutrients • Reduced Need for Fertilizers • Turf Topdress • Water Conservation

## Buy Award Winning Compost!

Harvey Gibson, Compost Superintendent • phone (843) 670-8294  
HGibson@charlestoncounty.org • recycle.charlestoncounty.org

Largest Compost Producer in the State of South Carolina



Charleston County  
Compost



Charleston County does not deliver compost.



**US Composting Council**  
Seal of Testing Assurance®



# Metrics



	2012	2013	2014
<b>Inbound Food Waste (Tons)</b>	<b>828</b>	<b>2,850</b>	<b>3,188</b>
<b>Inbound Yard Waste (Tons)</b>	<b>51,679</b>	<b>58,561</b>	<b>59,039</b>
<b>Outbound Finished Compost (Tons)</b>	<b>4,389</b>	<b>8,364</b>	<b>7,163</b>
<b>Compost Sales - Bulk</b>	<b>\$ 43,879</b>	<b>\$ 81,191</b>	<b>\$ 68,903</b>
<b>Compost Sales - Bagged</b>	<b>\$ 15,172</b>	<b>\$ 26,718</b>	<b>\$ 27,218</b>
<b>Total Compost Sales</b>	<b>\$ 57,569</b>	<b>\$ 107,909</b>	<b>\$ 96,121</b>



# Next Steps



# Christina Moskos

Recycling Coordinator

Charleston County Environmental Management

**(843) 720-7113**

[cmoskos@charlestoncounty.org](mailto:cmoskos@charlestoncounty.org)

