



The North Carolina

Recycling Business Assistance Center

C&D Recycling in North Carolina

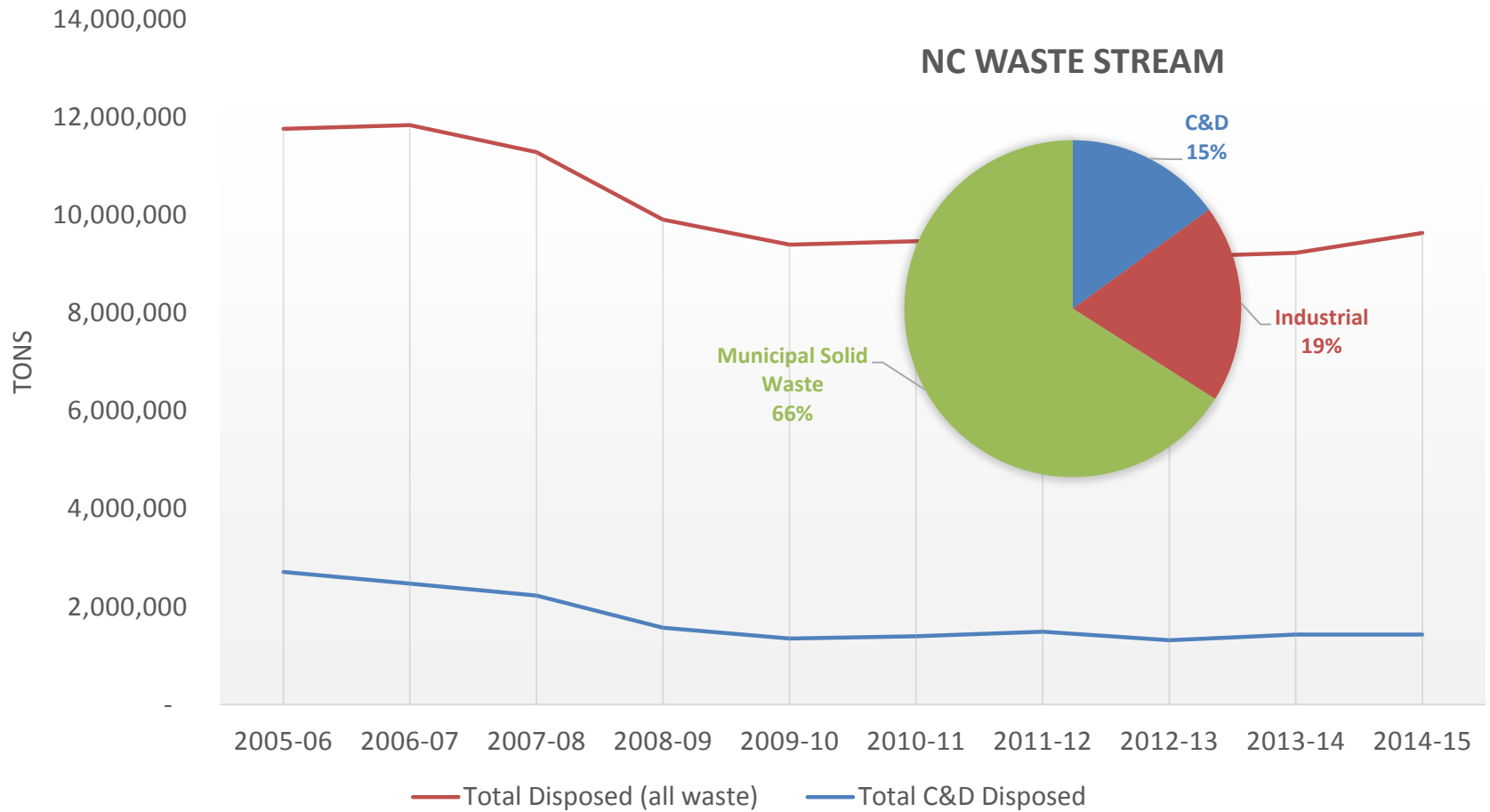
March 21, 2016

Wendy Worley

Market Development Specialist



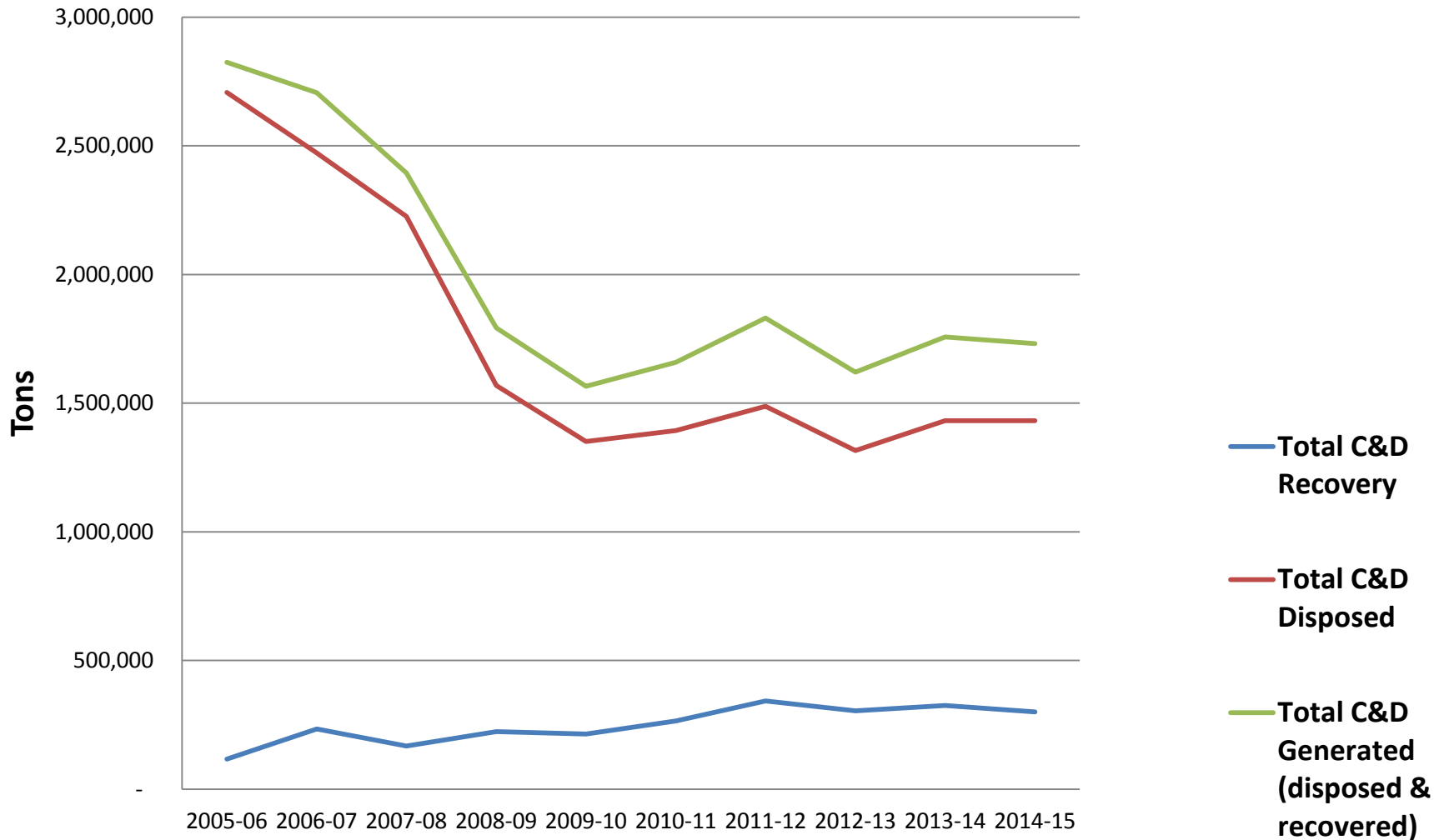
Total Disposed Waste vs. C&D Disposed Waste in NC



Source: North Carolina Annual Solid Waste Reports. Data includes MSW, industrial, C&D, and out-of-state disposed waste.

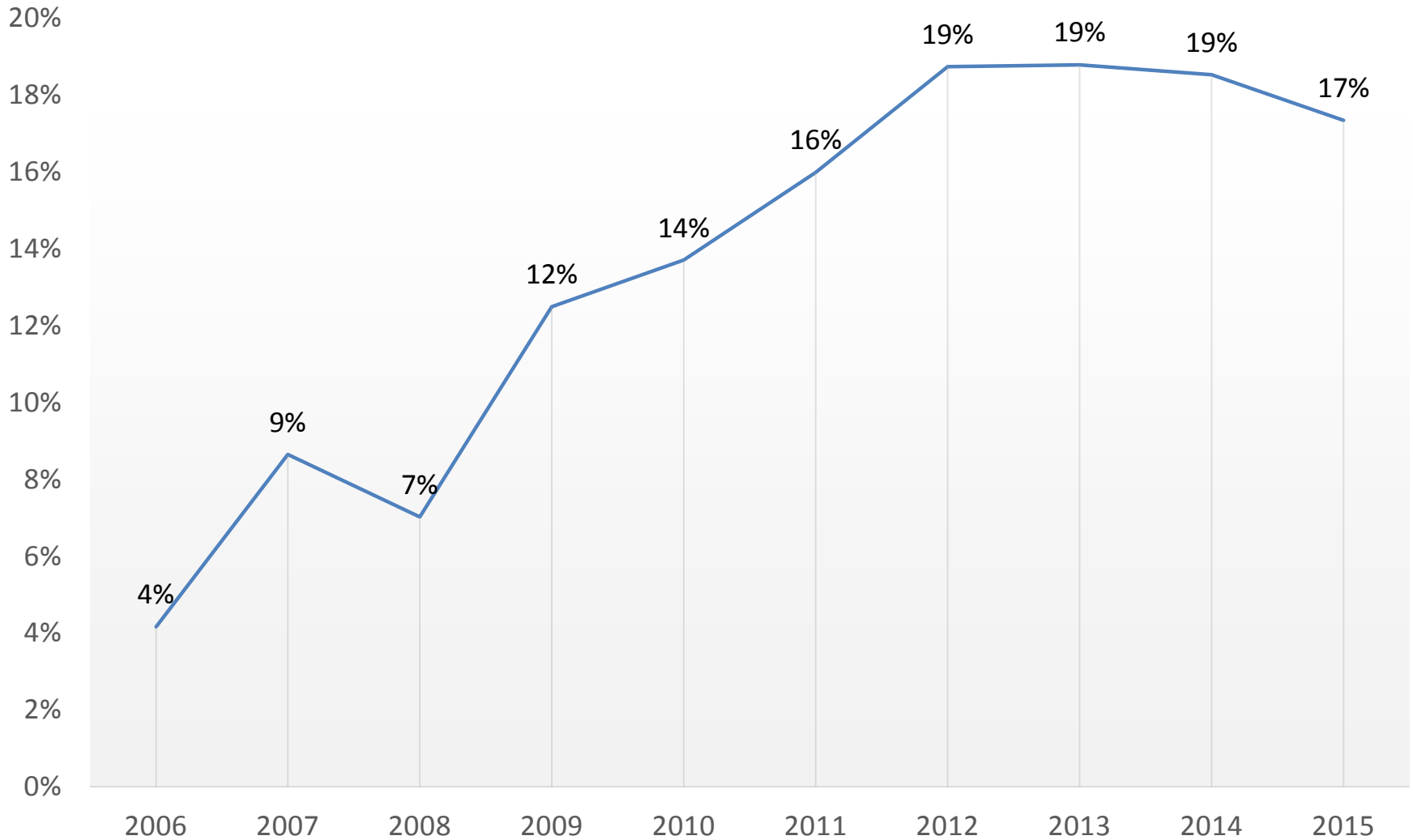


Total C&D Disposed VS. Recovered



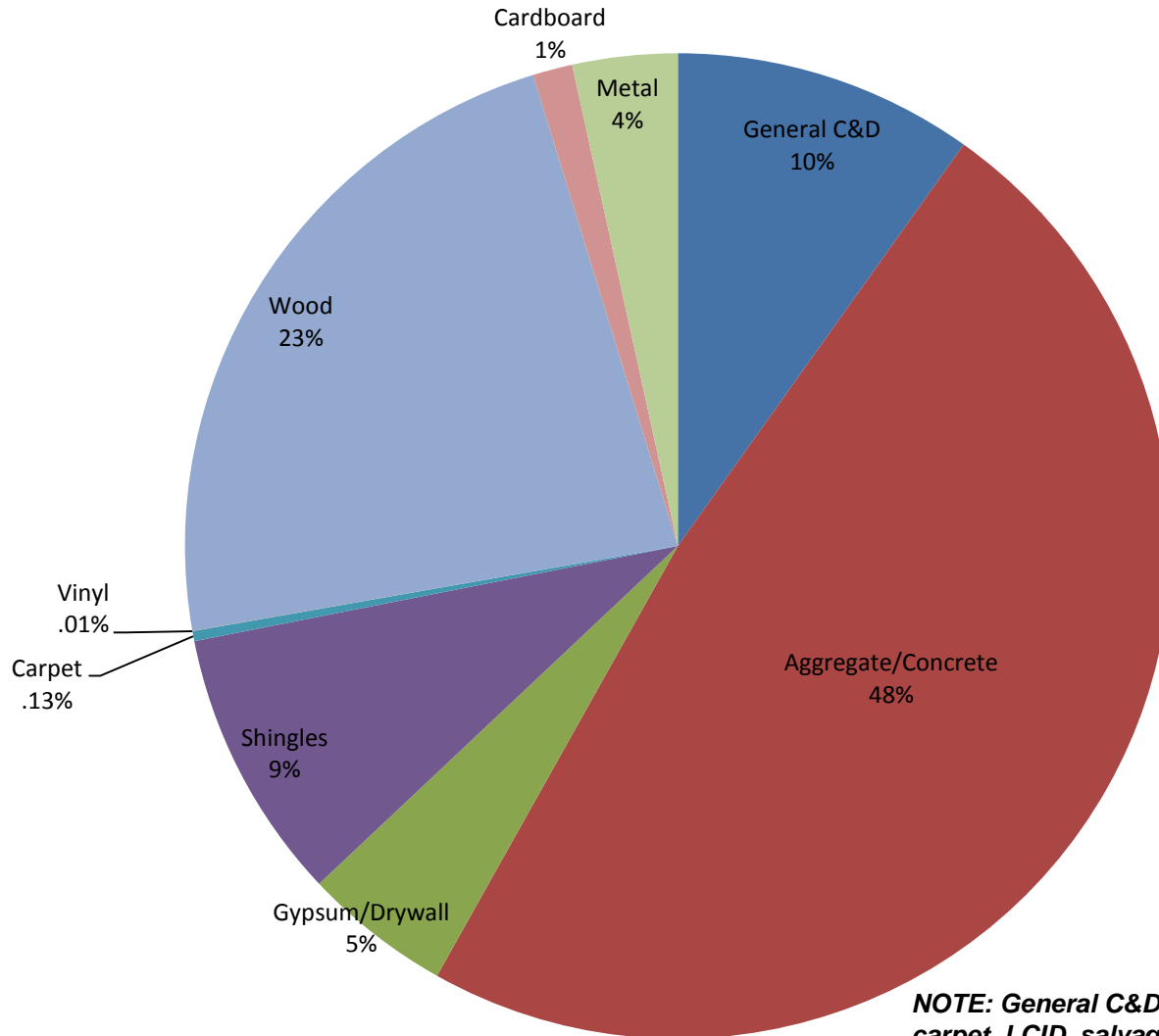


NC C&D Recycling Rate



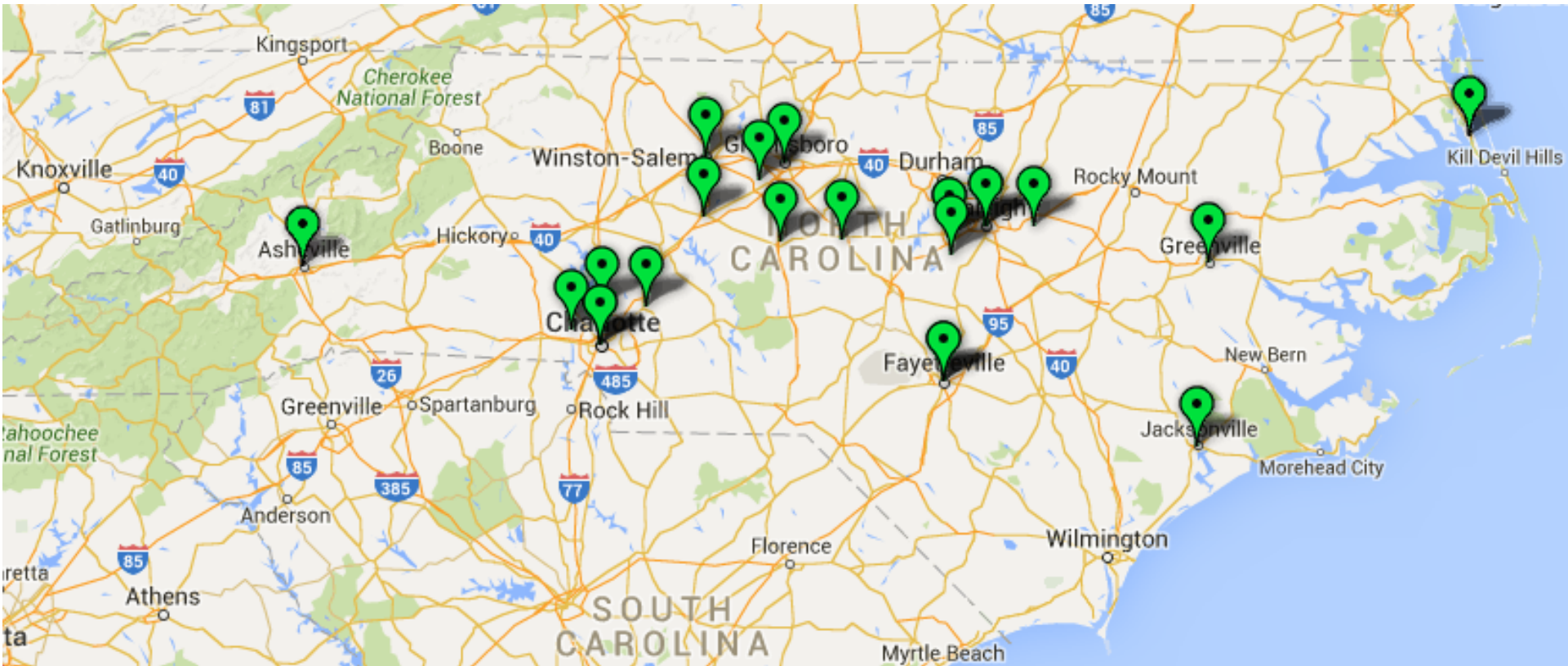


2015 C&D Recovered Commodities



NOTE: General C&D includes paper, glass, topsoil, carpet, LCID, salvaged materials, tires.

2015 NC Private Permitted C&D Facilities*



****Permitted private C&D facilities (disposal, processing, or transfer stations) with documented diversion in North Carolina.***









Markets and Market Development





Thank You!

For more information:



www.p2pays.org/DMRM

Wendy Worley

wendy.worley@ncdenr.gov

Phone: 919-707-8136



Total Public and Private C&D Recovered by Commodity Type

