

Overview of Glass Recycling in North Carolina

Mike Greene

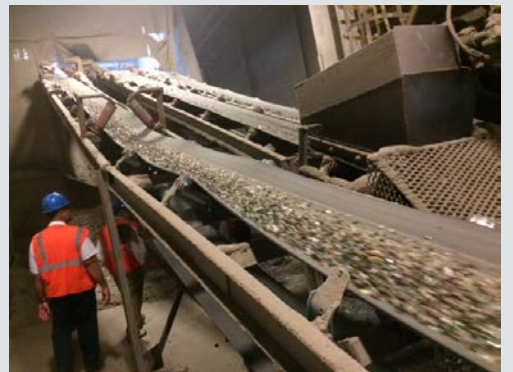
Division of Environmental Assistance and Customer Service

North Carolina Department of Environmental Quality



Why Glass Recycling is Important to NC

- Glass manufacturing a long-standing part of NC's manufacturing economy
 - Ardagh plants in Wilson and Henderson
 - O-I plant in Lexington (and another in Danville, VA)
- Large glass container users in NC
 - Food and beverage manufacturers
 - Growing craft brewery industry
- NC home to one of the most sophisticated glass beneficiation plants in the U.S.



Why Glass Recycling is Important in NC

Part of an overall effort to reduce dependence on landfilling and return commodities to economic use.

Energy reduction and resource conservation benefits

North Carolinians have a growing recycling ethic and ***expect*** to recycle glass

ABC Law 2008 – Required all ABC permit holders with on premises consumption to recycle beverage containers



Why Do We Need to Continue Glass Recycling?

- Residents expect glass recycling
- Communities that have removed it have suffered tremendous public relations consequences
- Dropping glass does not mean the cost goes away
- Cost moves to the solid waste stream
- Costly equipment and upkeep if you process it yourself
- Landfill cover still requires clean glass

Why Do We Need to Continue Glass Recycling?

- Single-stream recycling is still the preferred method
 - Higher participation
 - Higher tonnages
- If you must remove it from your single-stream program, be sure to offer residents an alternative drop-off option.
- We can still offer support to programs that chose to recycle glass a different way
 - Markets
 - Grants
 - Education & Outreach



Changing Glass Recycling for Your Residents

- Get your message out early
 - Tell residents where can they take glass
 - Best messaging
 - It's all about contamination
- Prepare for a strong reaction
- Own your decision
Stay consistent

NO GLASS

IN YOUR CURBSIDE RECYCLING BIN!

Glass bottles and jars **CAN** be taken to the **Wayne County recycling center** to be recycled separately.

Intact household glass (windows, mirrors, glass dishware, Pyrex, etc.) can be taken to a thrift store. Broken household glass belongs in the trash. Visit the Wayne County Solid Waste Department's website for more information: www.waynegov.com/382/solid-waste or call: 919-689-2994.

Not Accepted At The Recycling Center

Need details?

Mike Greene

NC DEACS

• 919.707.8137

• mike.greene@ncdenr.gov

