



South Carolina Department of Health and Environmental Control

S.C. Solid Waste Management for Fiscal Year 2021

CRA 32nd Annual Conference & Tradeshow
March 21 – 24, 2022

Changes to Our Office

- Office of Solid Waste Reduction & Recycling now one section
- Staff changes and shift in job duties
- Reporting moving to newly created Regulation Development, Planning, and Reporting Section





South Carolina Department of Health and Environmental Control

How are we doing?

By the Numbers

- MSW recycling:
 - Increased amount by 2% from FY20
 - Recycling rate decreased to 23.9%
- TSW recycling:
 - Increased amount by 3%
 - Recycling rate decreased to 32%



Executive Summary



For 30 years, the Act has provided the framework for South Carolina to safely and efficiently manage its solid waste in ways that protect human health, public safety, and the environment.

This annual report is one of the primary requirements of the Act. Much of the report focuses on measurement of the amount, composition, and disposition of solid waste.

Tracking this information provides essential data for local governments to plan, adjust, and sustain programs. It also is critical in developing recycling markets in the state and region.

Table 2.1 shows the key statistics of SWM in the state in FY21. MSW and TSW tonnages are based on amounts within South Carolina counties only.

Population	5,118,425
Recycling Programs	88
Curbside Recycling Programs	68*
Drop-Off Sites	547
MSW Disposed Of	3,772,282 tons
MSW Recycled	1,183,984 tons
MSW Generated	4,956,266 tons
MSW Recycling Rate (percent)	23.9
MSW Disposal Rate (p/p/d)	4.0
TSW Disposed Of	11,436,162 tons
TSW Recycled	5,374,903 tons
TSW Generated	16,811,066 tons
Cost of SWM**	\$380,041,946
Recycling Revenue**	\$12,562,586

* One curbside program ended during FY21. The FY concluded with 67 programs.

** Amount reported by S.C. local governments.

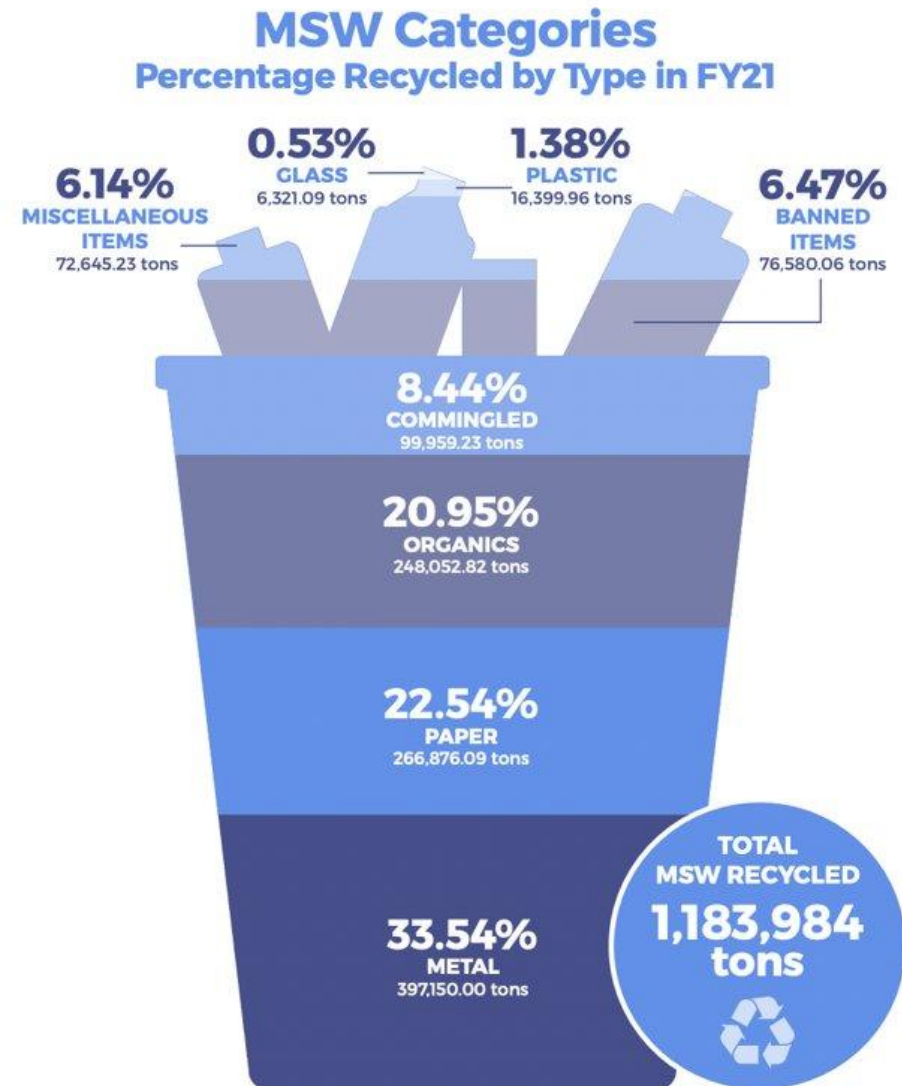
Highlights in the FY21 Report

Here are 10 key highlights from this report.

- 1** MSW recycling increased to 1,183,984 tons - a 2 percent increase from FY20 (1,161,065 tons). The recycling rate dropped to 23.9 percent from 24.7 percent. This was the 12th consecutive year that South Carolinians recycled more than 1 million tons of MSW.
- 2** MSW disposal increased by 230,543 tons from FY20 - a 6.5 percent increase - with a disposal rate of 4.0 p/p/d.
- 3** TSW recycling grew slightly to 5,374,903 tons - an almost 3 percent increase. The recycling rate, however, decreased to 32 percent from 36 percent.
- 4** TSW disposal surged to 11,436,162 tons from 9,399,943 tons in FY20 - a 22 percent increase - with a disposal rate of 12.2 p/p/d.
- 5** South Carolina exported 102,561 tons of solid waste and imported 794,610 tons.
- 6** Local governments reported spending nearly \$380 million on SWM while earning a reported \$12.5 million from recycling revenue.
- 7** Capital investment in the recycling industry increased to \$522 million in FY21 from \$119 million in FY20 with 526 jobs attributed to the industry.
- 8** There were 417 permitted solid waste facilities representing 11 types of facilities.
- 9** South Carolina's population increased from the 2010 U.S. Census but decreased from the FY20 estimated population. All reporting years after 2010 and before 2020 were based on the 2010 Census count.
- 10** C&D recycling facility data is included in this report for the first time following revisions to the Act in 2018. These revisions established conditions for facilities that process or recycle C&D debris. Alternative daily cover also is included for the first time as MSW recycled material contributing to the MSW recycling goal.

MSW Recycling

- Top commodity recycled: metal
- Sharp decrease in glass recycling
- Residential recycling (531,621 tons) increased by 6% from FY20



NOTE: Percentages are based on weight of the reported material.

Grants

- Awarded \$3.6 million in recycling grants to local governments, schools, and colleges/universities for FY22; included solid waste, waste tire, and used motor oil funding
- Local government FY23 application period open until April 1st

MSW Recycling Goal: 40% or more recycling rate

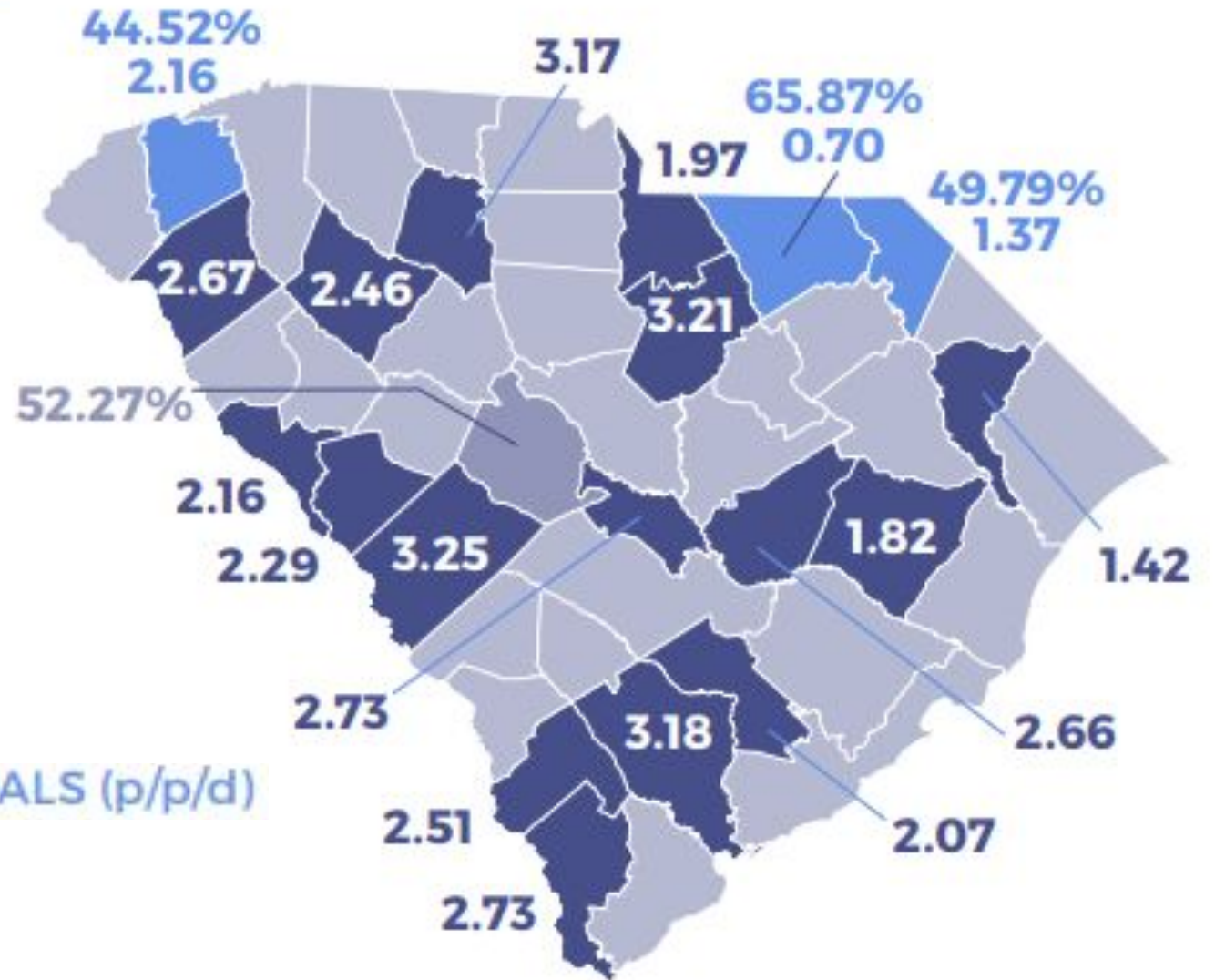
- Chesterfield
- Lexington
- Marlboro
- Pickens

MSW Reduction Goal:

3.25 p/p/d or less

- Aiken
- Anderson
- Calhoun
- Chesterfield
- Clarendon
- Colleton
- Dorchester
- Edgefield
- Hampton
- Kershaw
- Jasper
- Lancaster
- Laurens
- Marion
- Marlboro
- McCormick
- Pickens
- Union
- Williamsburg

- DISPOSAL GOAL (p/p/d)
- RECYCLING GOAL (percent)
- RECYCLING (percent) & DISPOSAL GOALS (p/p/d)



Looking Ahead to 2030

- MSW disposal rate remains the same:
Dispose 3.25 p/p/d or less
- MSW recycling goal changes:
Recycle 50% or more
- Food recovery goal remains the same:
Reduce food waste by 50%

Legislation

- Electronics – H.4035 (May 17, 2021)
- Advanced recycling – S.525 (January 27, 2022)
- Solar panels

Priorities and Challenges

- Create a statewide waste reduction initiative
- Reduce food waste and increase composting
- Promote regional partnerships
- Increase business reporting
- Find solutions to scrap tire issues

Plans with SC Dept. of Commerce

- Set up an SC Materials Exchange in partnership with SWIX
- Complete an updated Economic Impact Study
- Complete a Waste Characterization Study

Upcoming Events

- **April 4-8:** Food Waste Prevention Week
 - **April 6:** Don't Waste Food SC Ambassador Day
- **April 12-13:** SC Recycling Professionals Certification Workshop
- **July:** Take Action SC Summer Teacher Workshop
- **Fall:** Solid Waste & Recycling Professionals Annual Workshop



**Thank you. Gracias. Merci.
Danke. Arigatou. Grazie.
Jo Jeh, Daw-Dyeh.
Yabba Dabba Doo!**

QUESTIONS?

Richard Chesley

(803) 898-1327

cheslerl@dhec.sc.gov

scdhec.gov/recycle

1-800-768-7348