



# INCREASING FOODSERVICE PACKAGING RECOVERY THROUGH COMMUNITY PARTNERSHIPS

**NATHA DEMPSEY**  
**CRA CONFERENCE 2023**  
**MARCH 29, 2023**

# FOODSERVICE PACKAGING INSTITUTE

THE LEADING AUTHORITY FOR THE  
NORTH AMERICAN FOODSERVICE  
PACKAGING INDUSTRY SINCE 1933



## ABOUT FPI

### WHO WE ARE

The Foodservice Packaging Institute (FPI), the leading authority for the North American foodservice packaging industry, encourages the responsible use of all foodservice packaging through promotion of its benefits and members' products. Serving as the voice of the industry to educate and influence stakeholders, FPI provides a legal forum to address the challenges and opportunities facing the foodservice packaging industry.

### OUR MEMBERS

FPI includes approximately 90% of the entire industry in North America. Its core members are foodservice packaging manufacturers and their raw material and machinery suppliers.

# WHAT IS FOODSERVICE PACKAGING?





## WHAT ARE THE MOST IMPORTANT CHARACTERISTICS OF FOODSERVICE PACKAGING ITEMS?

### *2019*

- Performance
- Appearance
- Cost

### *2021*

- Cost
- Performance
- Appearance

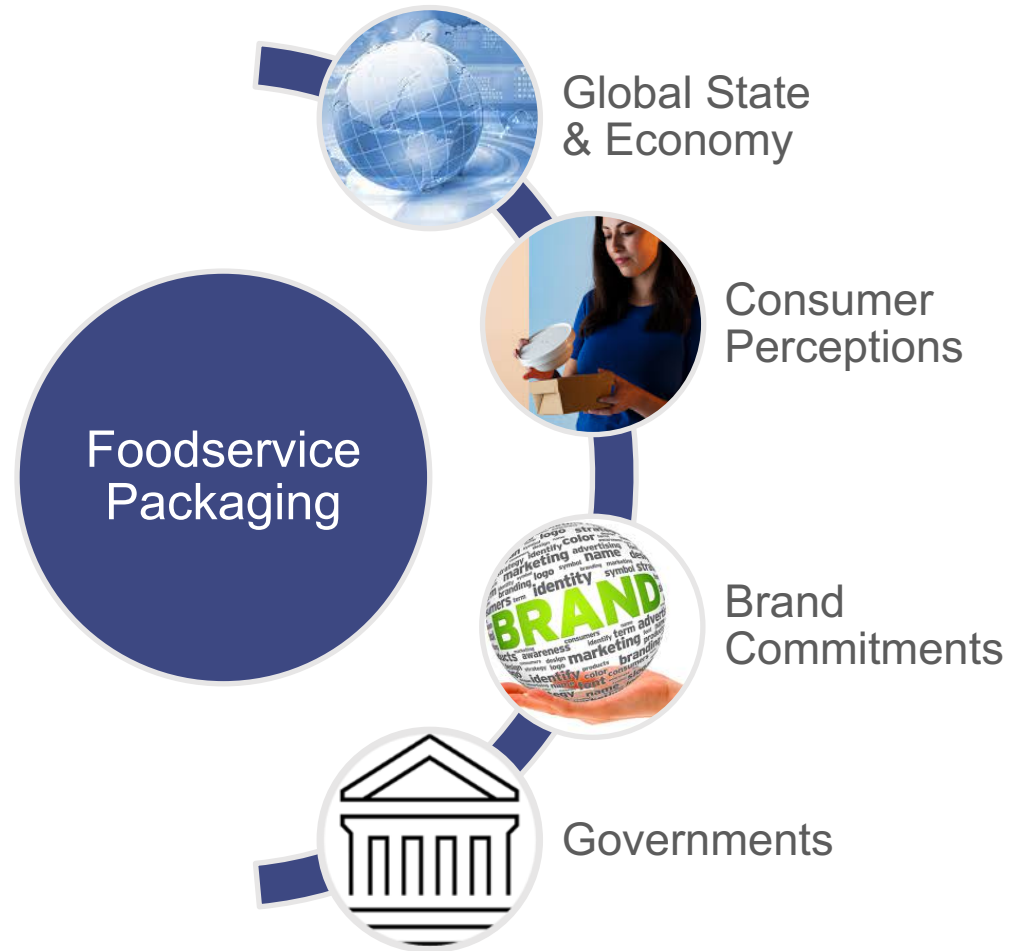
### *2022*

- Cost
- Performance
- Recyclable



The package should **depend** on the product – shape, size, material. But you can't forget, the product **depends** on that package.

# INFLUENCES



# FPI'S RECOVERY GROUPS



# CURRENT PRA/PRG/PCA GROUP MEMBERS

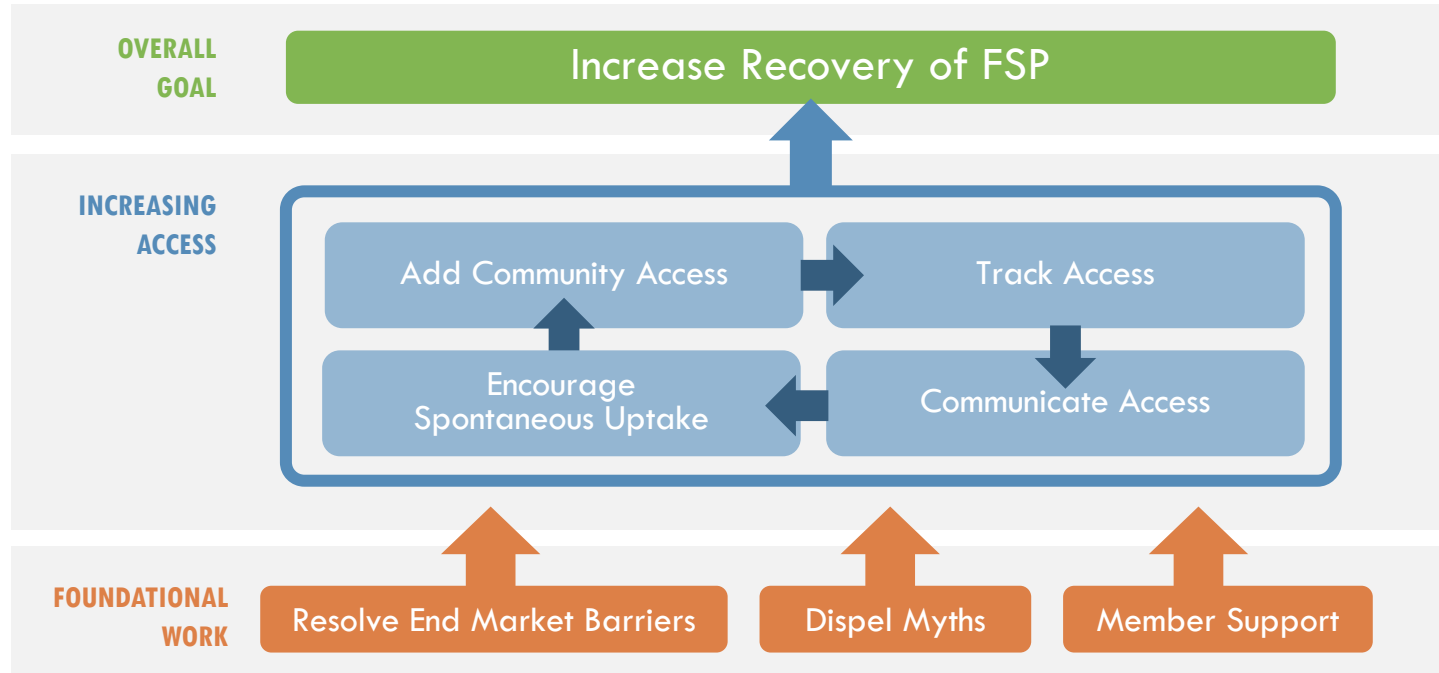




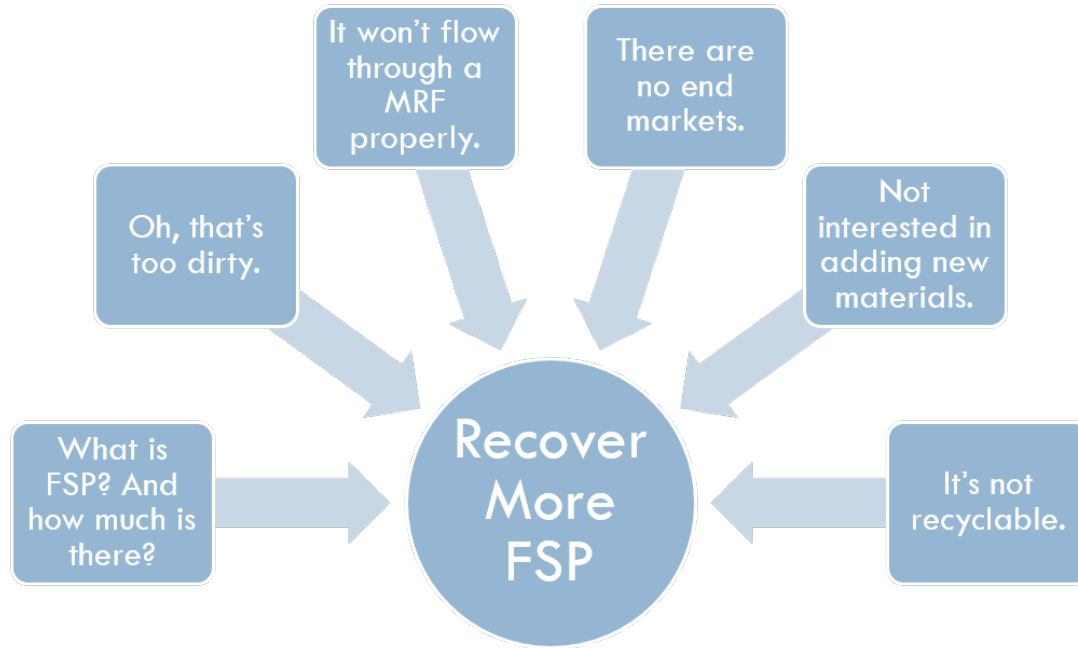
# FPI IS WORKING TOWARDS

- Programs that are material inclusive
- Holistic view of highest and best use of packaging
- Utilization of best practices to maximize FSP recovery and minimize consumer confusion
- Harmonization of definitions
- Alignment of the packaging industry

# OVERVIEW OF APPROACH



# WE ASKED. HERE'S WHAT WE HEARD.



# FOUNDATIONAL WORK

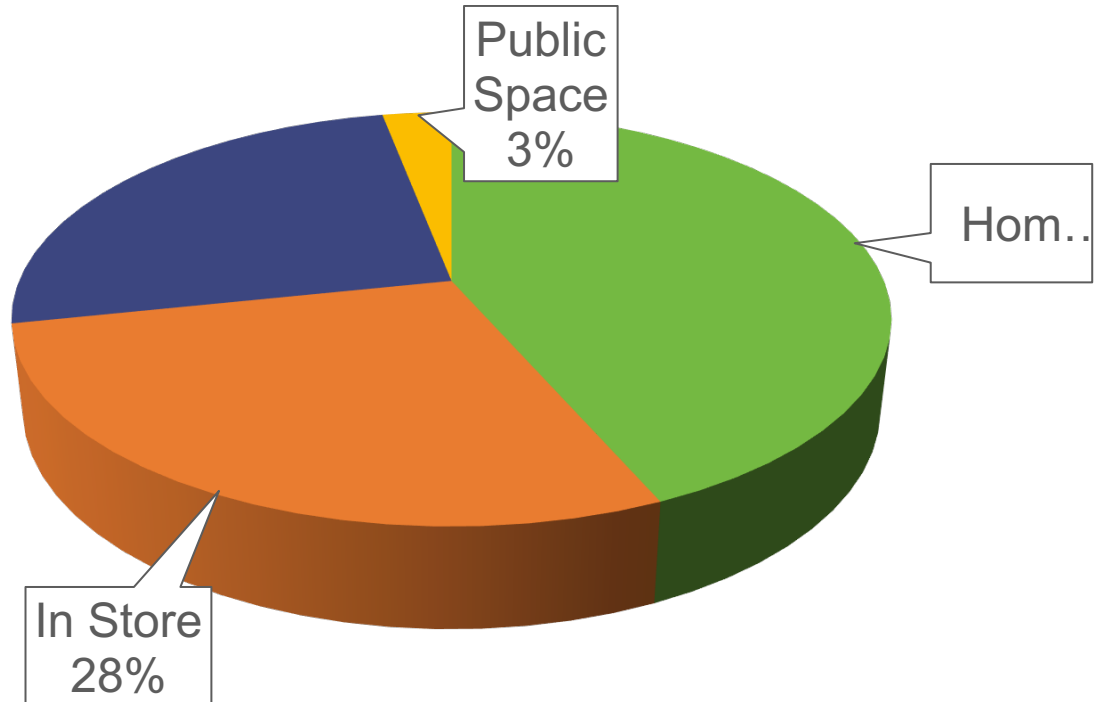
How much material is available? Estimated material generation	Who's recycling FSP? Conducted MRF Benchmarking Study	Are there end markets for FSP? Published end markets map	What are the access rates for FSP? Co-sponsored SPC Centralized Study on the Availability of Recycling			Where are domestic end markets for Paper FSP? • Surveyed mills; 4 accepting paper FSP • 16 markets at end of 2018 • 21 markets at end of 2019 • 30 confirmed markets at end of 2020 • 33 confirmed markets				
	Will the material flow to the right bale? Co-sponsored MRF Material Flow Study		How to expand end markets for FSP? Engaged in end market outreach, partnerships & development					Joint Declaration by 8 Mill Companies	Paper Cup Recycling white paper released	
2012	2013	2014	2015	2016	2017	How does compostable FSP contribute as a feedstock? Found compostable FSP provided the same benefit as traditional carbon / bulking materials	2019	2020	2021	2022
Where is the material available to be collected? Learned curbside had greatest volume for collection	Is food residue a problem? • Food Residue Study (Boston) • Food Residue Study (Delaware)  Found little to no difference between FSP versus other commonly recycled food packaging		How much FSP arises in bales? • Analyzed mixed paper bales in Seattle and NYC • Co-sponsored Rigid Plastics Bale Audit	What messaging is clearest for residents? Conducted National Resident Messaging Survey	How to add FSP to city's materials? Developed image library, flyers, ads, video, best practice language How can plastic FSP be made more recyclable? Co-sponsored BioCycle residential study and surveyed composters		Where are North American end markets for Plastic FSP? Surveyed PET, PP, and PS end markets How can plastic FSP be made more recyclable? Partnered with APR to develop Design Guide for Foodservice Plastics Recyclability	How much FSP arises in bales? • Mixed paper bale audit (1 MRF) corroborated 2015 findings • Mixed plastic bale audit corroborated 2015 findings	How much FSP arises in bales? Mixed paper bale audits from partner MRFs What are current access rates? Co-sponsored cup access study with NextGen	
	How will FSP impact the bale? Estimated impact									
								How can more PET be recycled? Spearheaded PET Thermodynamics Collaboration	Best capture opportunities for paper cups? Paper cup flow studies (4 MRFs) corroborated 2015 results on % to container line	Where to invest to increase PET recycling? Participating in PET Coalition
										How does contamination rates? Spearheaded Chicago Contamination Study
										Where does Plastic FSP flow in a MRF? RFID study Messaging Survey (report pending) Updated food residue study (planned)
Overviews of studies available at <a href="http://www.recycleFSP.org">www.recycleFSP.org</a> .										
Confidential to FPI Members Only										

Overviews of studies available at [www.recycleFSP.org](http://www.recycleFSP.org).



# WE ASKED. HERE'S WHAT WE HEARD.

## MOST FOODSERVICE PACKAGING IS DISCARDED AT HOME OR IN THE WORKPLACE

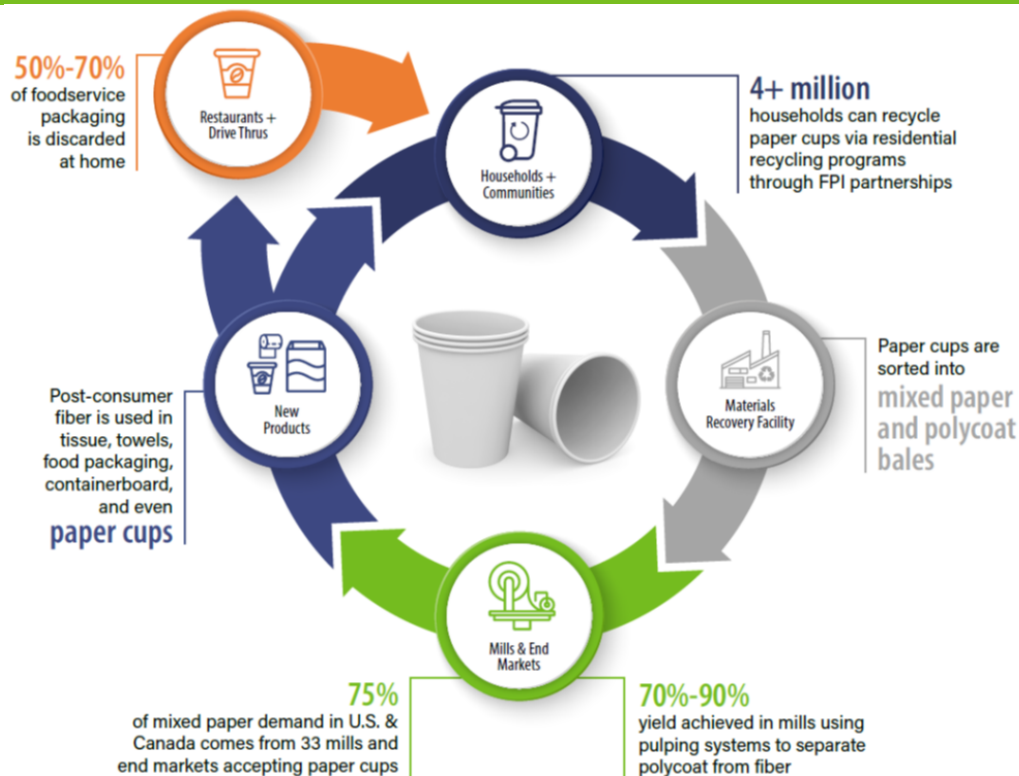




# PAPER CUP RECYCLING MILL COMMITMENT

# PAPER CUP RECYCLING

- Made with long, bleached fiber – highly desired by paper mills.
- Can be sorted into mixed paper (Grade 54) or polycoat (Grade 52) bales.
- Pulping systems can separate coatings from fiber with a 70%-90% yield.
- Fiber goes on to become cereal boxes, facial tissue, corrugated boxes, and new paper cups!



# PAPER CUP ACCEPTANCE IN TWO COMMODITIES

5

mills/facilities

3

companies

**accept cups  
in polycoat  
bales**

29

mills

9

companies

**accept cups in  
mixed paper  
bales**

representing



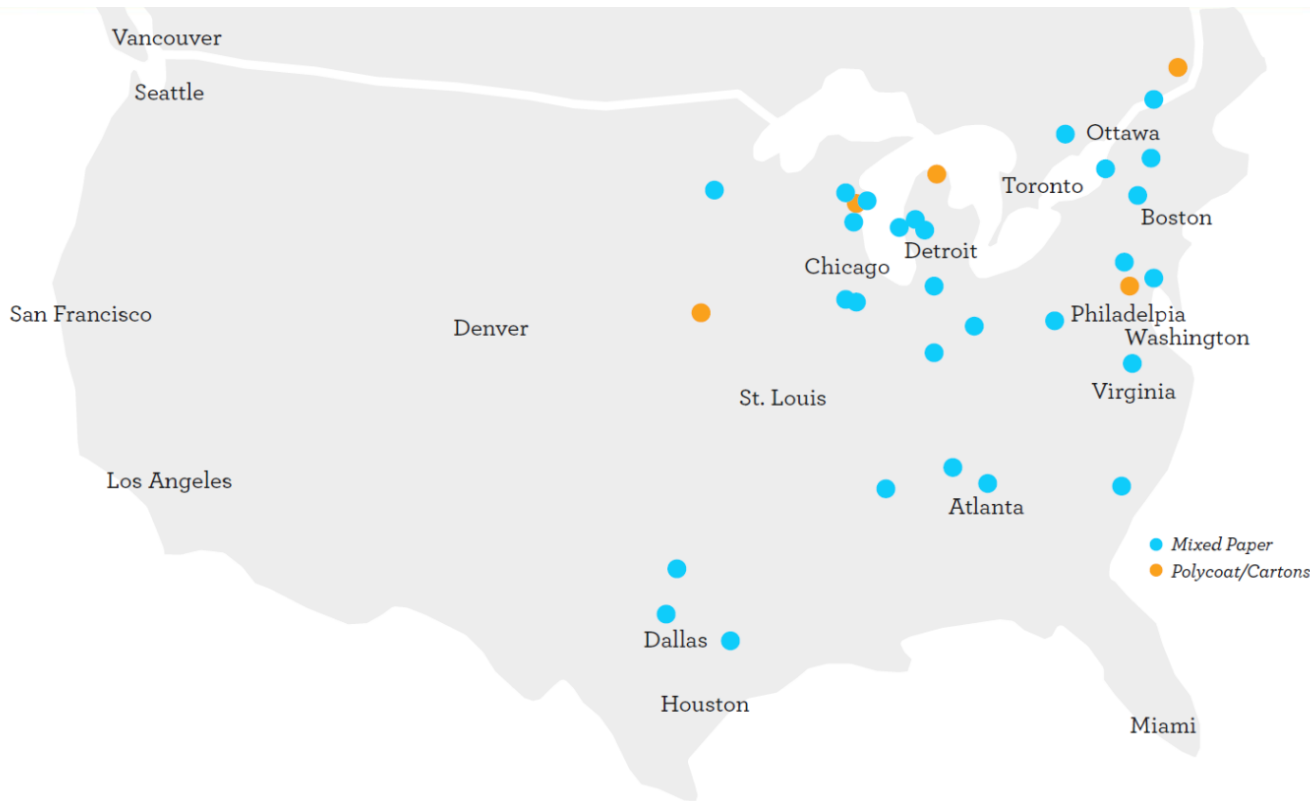
Of U.S./Canadian  
mixed paper  
demand (% by  
quantity consumed)



Of U.S./Canadian  
mills consuming  
mixed paper (% by  
mill count)



# NORTH AMERICAN PAPER CUP ACCEPTANCE



# END MARKETS FOR POST-CONSUMER PAPER CUPS

## Mixed Paper Markets

*The following mills purchase residential mixed paper bales containing paper cups. Some also accept other paper foodservice packaging.*

**Cascades**, Ashland, VA (operational Q1 2023)  
**Cascades**, Kingsey Falls, QC  
**Cascades**, Niagara Falls, NY  
**Essity**, Barton, AL  
**Essity**, Menasha, WI  
**Essity**, Middletown, OH  
**Essity**, South Glens Falls, NY  
**Georgia-Pacific**, Green Bay, WI  
**Georgia-Pacific**, Muskogee, OK  
**Graphic Packaging International**, Battle Creek, MI  
**Graphic Packaging International**, East Angus, QC  
**Graphic Packaging International**, Middletown, OH  
**Graphic Packaging International**, Kalamazoo, MI  
**Green Bay Packaging**, Green Bay, WI  
**ND Paper (sourcing via ACN)**, Fairmont, WV

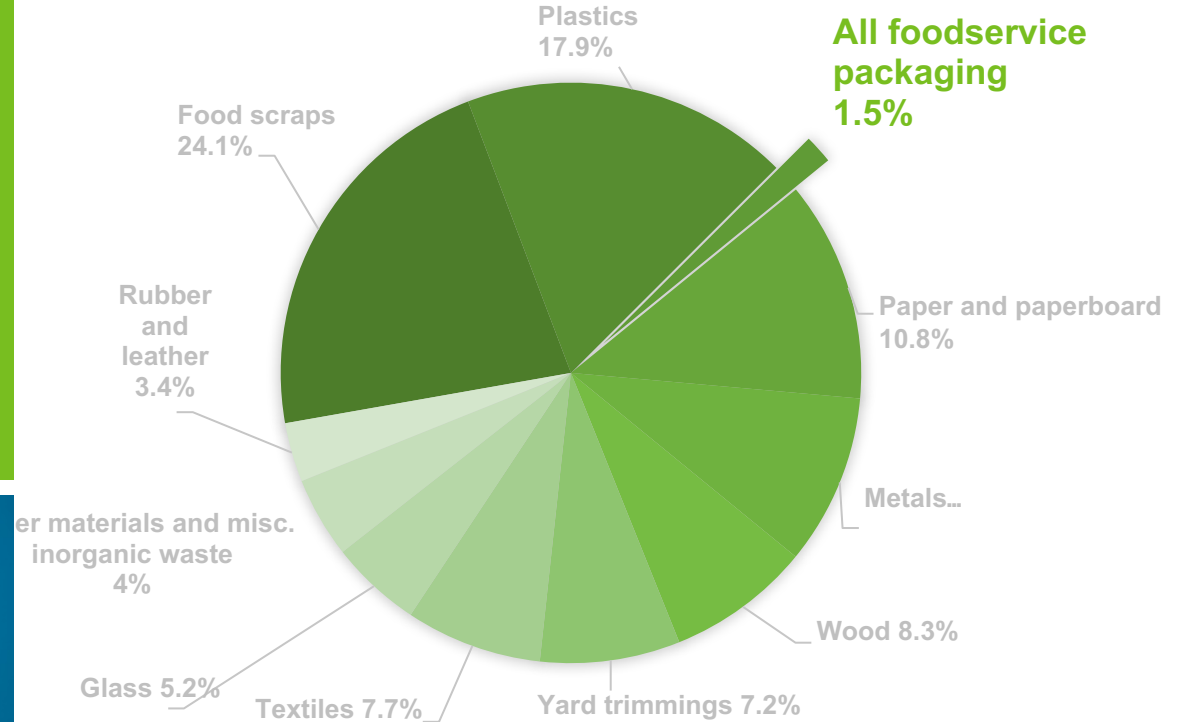
**Pratt**, Conyers, GA  
**Pratt**, Shreveport, LA  
**Pratt**, Staten Island, NY  
**Pratt**, Valparaiso, IN  
**Pratt**, Wapakoneta, OH  
**Sonoco**, Hartsville, SC  
**WestRock**, Aurora, IL  
**WestRock**, Battle Creek, MI  
**WestRock**, Chattanooga, TN  
**WestRock**, Dallas, TX  
**WestRock**, Eaton, IN  
**WestRock**, Missisquoi, VT  
**WestRock**, St. Paul, MN  
**WestRock**, Stroudsburg, PA

## Polycoat / Carton Markets

*The following mills purchase bales containing paper cups along with aseptic and gabletop cartons.*

**Continuus**, Des Moines, IA  
**Continuus**, Philadelphia, PA  
**Great Lakes Tissue**, Cheboygan, MI  
**Sustana (Breakey Fiber)**, Levis, QC  
**Sustana (Fox River Fiber)**, DePere, WI

# WHAT PERCENT OF DISCARDS ARE FOODSERVICE PACKAGING PRODUCTS? LESS THAN 2%



Source: U.S. Environmental Protection Agency (Dec 2020) *Advancing Sustainable Materials Management: 2018 Tables and Figures*.

# WHAT FPI OFFERS



Information,  
research data



Technical assistance on  
operational questions



Support in end  
market dialogues



Resident Education  
materials (e.g. flyers,  
templates, graphics)



Communications  
grants to assist with  
resident education



Equipment grants



# FPI COMMUNITY PARTNERSHIPS TO DATE

## 2017:

- Chattanooga, TN
- Louisville, KY
- Washington, DC

## 2018:

- Denver, CO
- Sioux Falls, SD

## 2019:

- Kent County, MI\*
- Clark County, IN

## 2020:

- Athens-Clarke County, GA
- St. Lucie County, FL

## 2021:

- Lansing/East Lansing, MI Metro\*
- Atlanta, GA
- Detroit, MI Metro\*
- Madison, WI\*



# ATLANTA & DETROIT METRO



**RECYCLE MORE!**  
WWW.DETROITRECYCLES.ORG

**DETROIT  
RECYCLES**



### PAPER

Flattened Cardboard  
*(clean & empty)*

Paper Containers & Cups  
*(clean & empty)*

Milk, Juice & Soup Cartons  
*(clean & empty)*

Newspapers/Inserts, Phone  
Books, Magazines, Junk  
Mail & Office Paper

**NO TISSUE**

### PLASTIC

Plastic Bottles,  
Cups & Containers  
*(clean & empty)*

**NO PLASTIC BAGS**

### GLASS

Glass Bottles & Jars  
*(clean & empty;  
amber, green & clear)*

**NO WINDOWS  
OR CERAMICS**

### METAL

Steel & Aluminum  
Bottles/Cans  
*(clean & empty)*

**NO PAINT  
CANS**

### HOW TO PREPARE YOUR RECYCLABLES:



Recyclables  
should be clean  
and empty



Do not use plastic  
bags; leave  
recyclables loose.



Include only listed items. Check with  
your local government or recycling  
service provider if unsure.

TIP: return grocery bags to participating stores or local W.R.A.P. locations for recycling.

# HENRY FORD HEALTH SYSTEM



HENRY FORD HEALTH.



## Compost More!

Place only the following materials in the compost bin

### Food Waste

#### INCLUDES:

- Waste from food preparation
- Patient tray food waste
- Unserved prepared foods
- Cooled soups
- Expired foods (*all packaging removed*)



Fruits



Vegetables



Eggshells



Bread/Pasta/Grains



Meat/Bones/Dairy



Oil/Grease

### Other Organic Waste

#### INCLUDES:

- BPI Certified products
- Food-soiled paper and cardboard (e.g. pizza boxes and packing boxes—remove tape and staples)
- Unbleached paper products



BPI Certified Products



Coffee Grounds, Unbleached or BPI Certified Coffee Filters and Tea Bags



Napkins and Paper Towels unbleached only

### Non-Compostable Materials: When In Doubt, Leave It Out!



No Glass Jars/Bottles



No Plastic  
*includes jugs, bags, wrap, utensils, straws, bottles*



No Condiment Packaging



No Metal  
*includes food/beverage cans, utensils*



No Bleached Paper Towels/Napkins



No PPE  
*includes masks, gloves, hair nets*

# FPI RESULTS BY THE NUMBERS

## RESULTS

- 2.9M and 5.9M households added plastic and paper FSP since 2017, respectively
- 3.29% access add
- Reduction in contamination at the MRF
- Increase in resident participation
  - Increase in materials into the system
  - Increase in bin or cart requests

## EXAMPLES

- Washington DC
  - Contamination decreased from 33% to 26%
  - Increased mixed paper from 9% to 20%
- Chattanooga, TN
  - Contamination decreased from 14% to 7%
  - Increase fiber collection from 62% to 73%



# WEBSITES



[Foodservice Operators](#) [Communities](#) [Materials Recovery Facilities](#) [End Markets](#) [Composting & AD Facilities](#) [Paper Cup Recycling](#) [About](#)

## Foodservice Packaging Recovery

No matter what role you play in recovering foodservice packaging, this toolkit has something for everyone. Recovering Foodservice Packaging (FSP) can have substantial benefits in cost-saving waste reduction, revenue generation, reduction of environmental impact and positive expectations from residents and customers. This website presents lessons learned in successful recovery of foodservice packaging. It is a comprehensive resource on what foodservice packaging is currently being recovered, collected, processed and marketed. Let's get started!



Foodservice Operators



Communities



Materials Recovery Facilities



End Markets



Composting & AD Facilities

[www.recyclefsp.org](http://www.recyclefsp.org)  
[www.recyclespinca.org](http://www.recyclespinca.org)



[FPI](#) [FOODSERVICE OPERATORS](#) [COMMUNITIES](#) [MRFs](#) [COMPOSTING + AD FACILITIES](#) [END MARKETS](#) [FAQ](#)

## RECOVERING YOUR TAKEOUT PACKAGING IN CALIFORNIA



California is a national leader in recycling and recovery programs. To reach its 75% recycling goal, California must explore ways to recover additional materials like takeout packaging and improve existing materials recovery programs.

Cups, takeout containers, pizza boxes and paper bags provide convenience to busy consumers who want their meals at the right place, at the right time. When finished, consumers should give this packaging a chance to become new products or enrich soil – rather than send to the landfill or litter on land or in waterways. Join us in working to capture the full value of the materials that many Californians use every day!

*Click a tile below to see resources related to your role or interest.*



FOODSERVICE OPERATORS



COMMUNITIES



MRFs



COMPOSTING + AD  
FACILITIES



END MARKETS

# CONTACT INFORMATION

NATHA DEMPSEY  
Foodservice Packaging Institute  
[ndempsey@fpi.org](mailto:ndempsey@fpi.org)  
[www.fpi.org](http://www.fpi.org)

MATT TODD  
Resource Recycling Systems  
[mtodd@recycle.com](mailto:mtodd@recycle.com)  
[www.recycle.com](http://www.recycle.com)

