



# SUSTAINABILITY EFFORTS



## Who we are?

Founded in 2019, **R3CYCLE** Industries is based in Waxhaw, NC. We are a post-industrial and post-consumer PET reprocessing company; our goal is to serve the Coca Cola system to increment the percentage of recycled PET content in their products. At the same time, we target to help the community and the environment by reducing plastic waste thru the process of recycling conversion



## What we do?

**R3CYCLE** supports the close loop PET recycling process by processing post-consumer and post-industrial polyethylene terephthalate (PET) as a finish good and raw material for end manufactured products.



## Our Mission

**R3CYCLE** with inspired commitment is dedicated to help keep the environment clean and green one bottle at a time.



## WE WILL...



### Package and Recovery Initiatives

- **REFRESH** over 60 million consumers across 14 states with 300 brands & flavors in a variety of packages.
- Develop local programs designed to help collect and **RECYCLE** our packaging.
- Partner with organizations to break down barriers that will enable us to **RENEW** recycled materials into new packaging or other goods.



### Water Stewardship

- Commit to ongoing development of initiatives designed to reduce water waste.
- Steward the collection of rain-water while exploring and developing future uses.
- Utilize processes designed to create clean and consistent standards from a variety of water supplies.



### Protection of our Climate

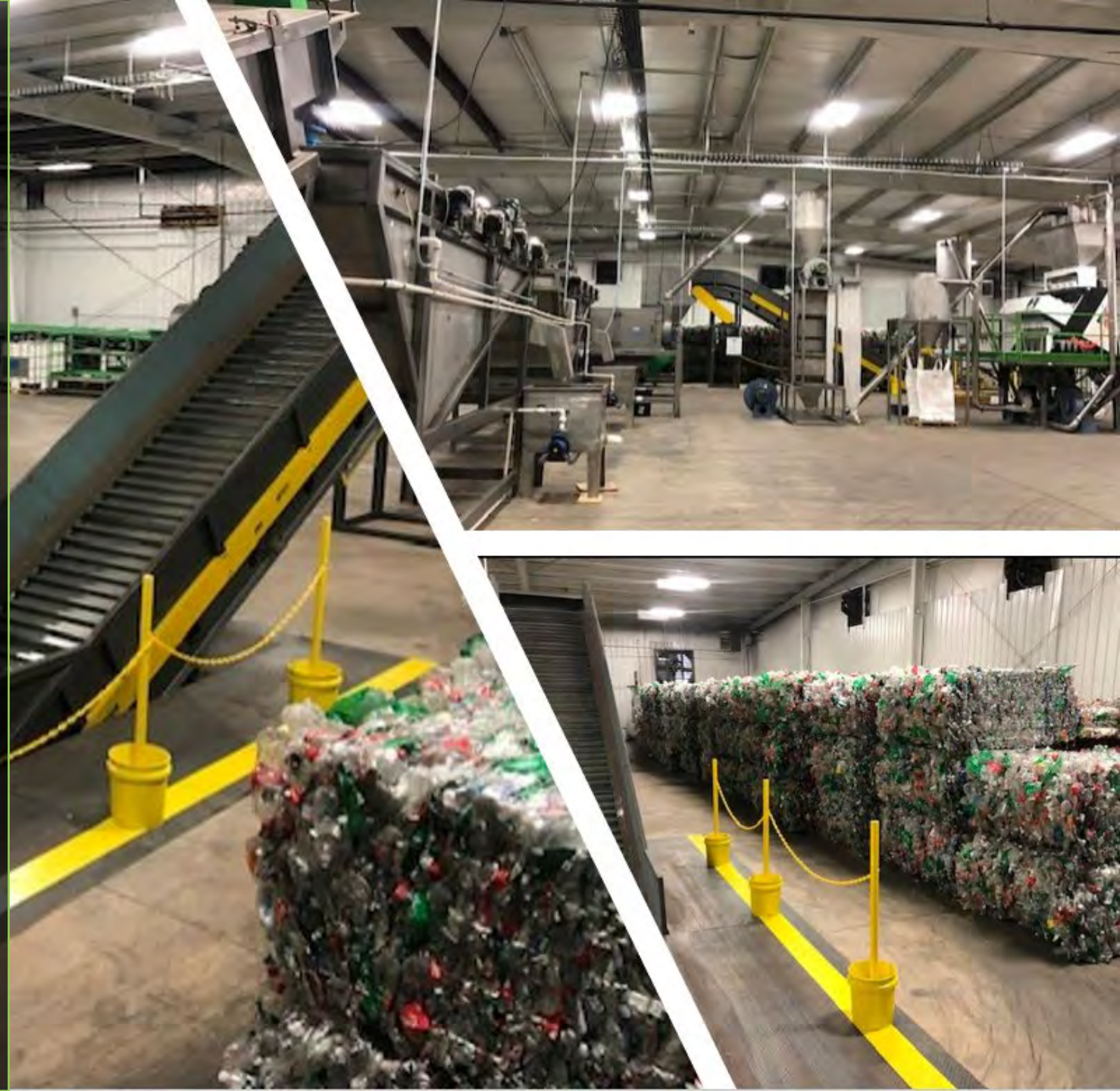
- Commit to sustainable business practices that reduce harmful outputs and conserve our planet's resources.
- Find ways to reuse the things that play a role in our everyday business with the end goal of reducing what goes to landfill.
- Design and lead community events and projects that enable environmental stewardship.

## We Are Aligned - Supporting a vision

**R3CYCLE** supports the environmental problem solving by reprocessing PET and converting it to flake for renewable uses.

## OUR SUPPORT TO THE SOLUTION

- Reprocess PET from Coca-Cola Bottlers: damaged, out of date, returns and other source of collections such as public events.
- Increase the PET collection pursuing to increment feedstock for circular economy initiatives.
- Maximize the yield of PET bales by separating Caps, labels, and PET.



# “Collection Gap”



Some communities successfully recycle 50%

Some communities successfully recycle 25%

However, many of America's 20,000 communities do not successfully recycle any packaging



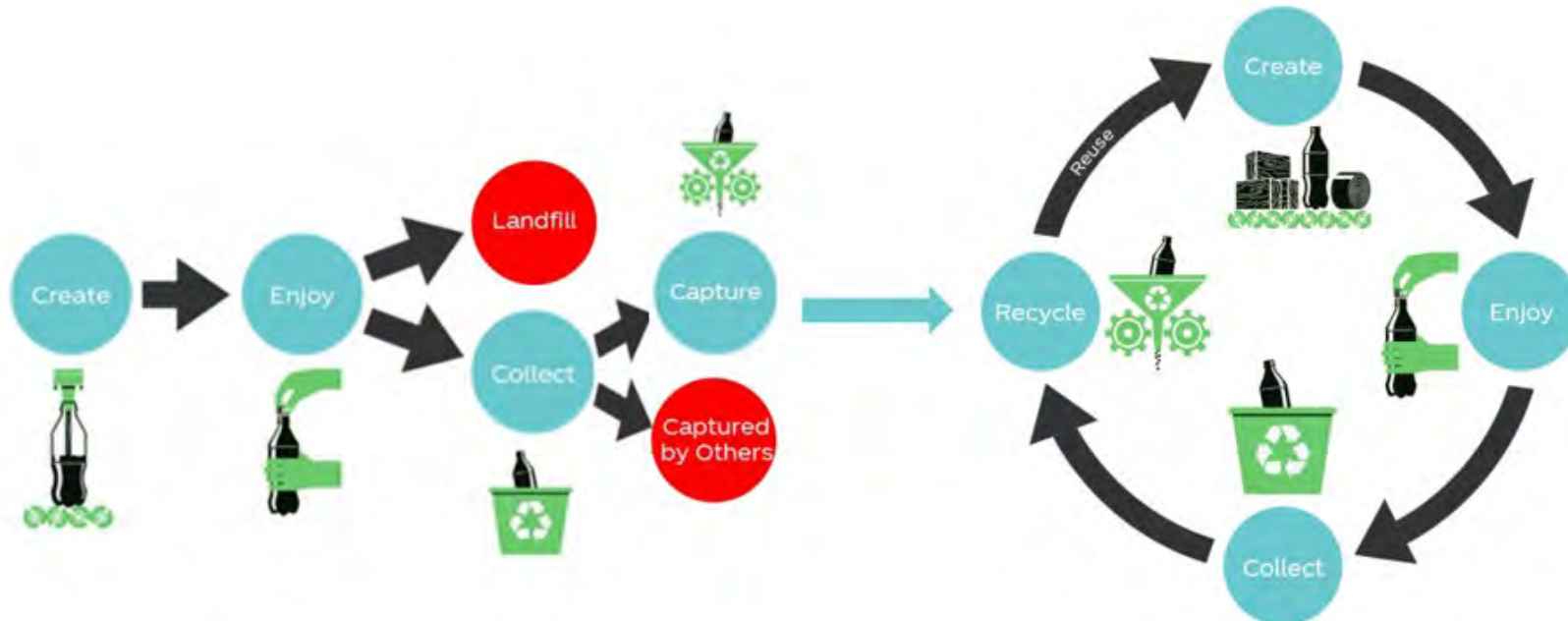
## COLLECTION VISION

### MISSION

- Ensure proper circular process – bottle to bottle
- Provide solutions to properly funnel recycle content for the Coca Cola system

### OPERATIONS

- MRF - Provide solutions for collectivities, companies and individuals to collect, recycle and repurpose their used products
- Local pickup routes in Charlotte, NC and surroundings
- Capabilities are metals sorting, PET, other plastics, cardboard & paper
- Operation will be adjacent to the reprocessing factory





**R3CYCLE**  
Recover, Reprocess and Reuse



REFRESH • RECYCLE • RENEW

