

Introducing the Recycling Program Solutions Hub

July 20, 2023

Carolina Recycling Association Lunch and Learn Presentation

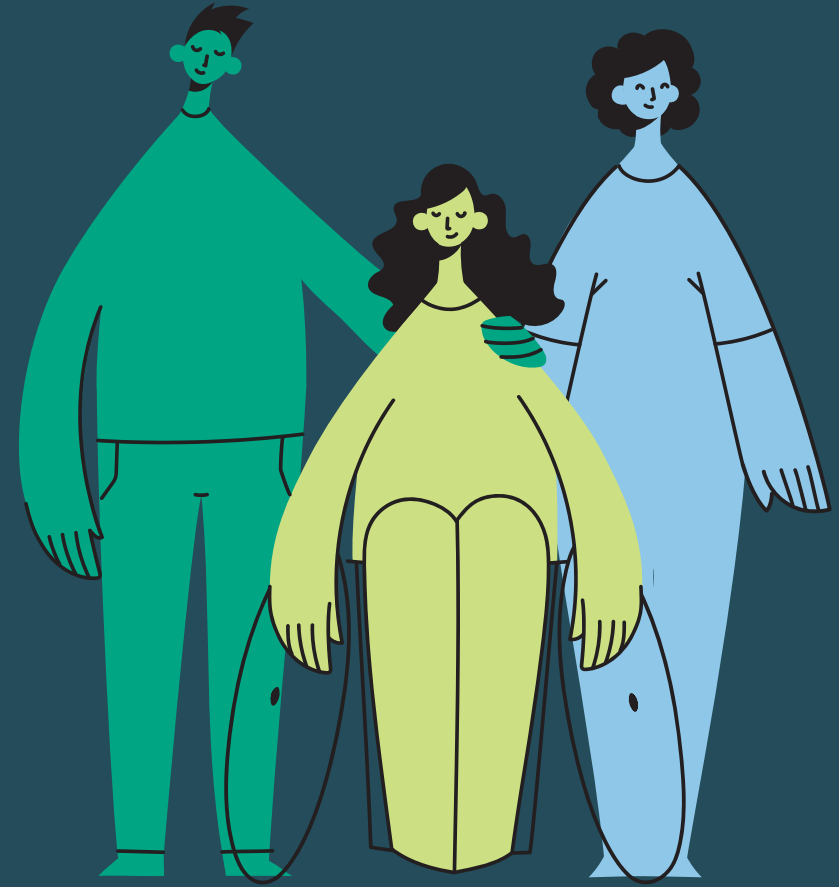
Rachel Kipar, Director of Recyclability Solutions



**The Recycling
Partnership**
Solving for Circularity

We mobilize people, data, and solutions across the value chain to reduce waste and our impact on the environment while also unlocking economic benefits.

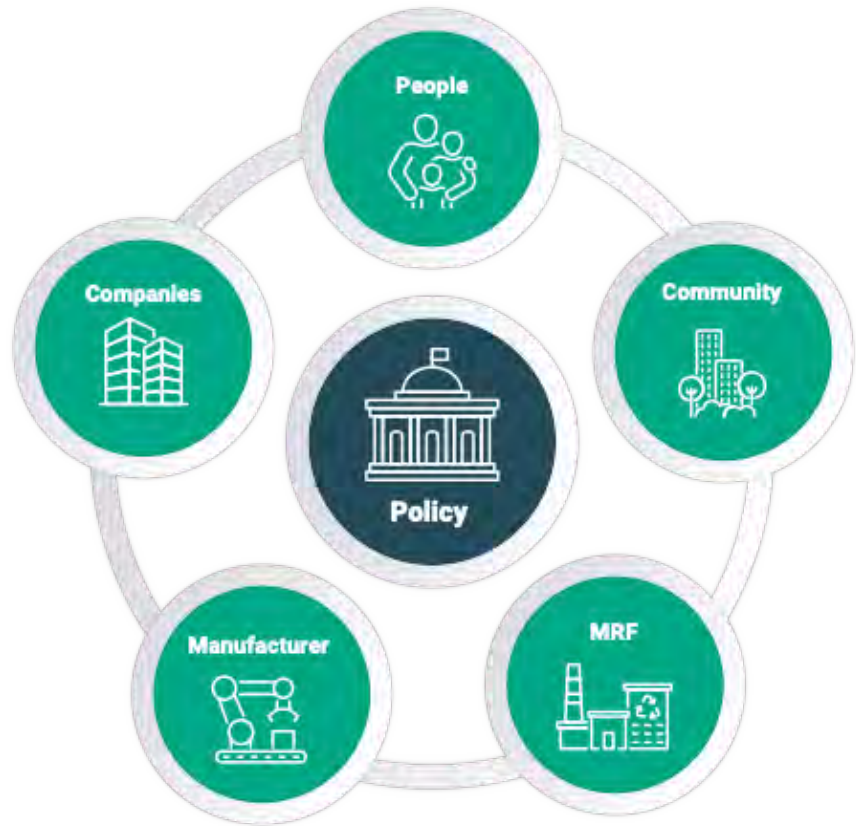
Building the System of the Future through Connected, Digital Solutions





All stakeholders contribute to the success of recycling.

We are launching tools to support...



PEOPLE are educated and motivated to recycle right

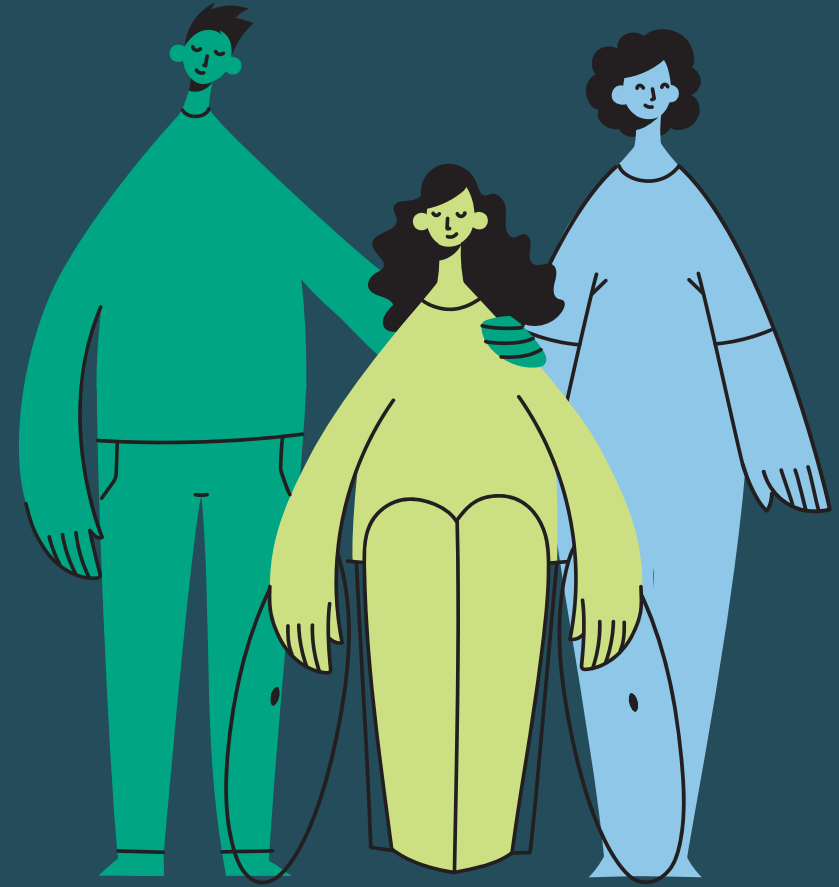


COMMUNITIES are empowered and connected in their efforts to improve programs



COMPANIES know how to solve recyclability challenges and adhere to policy requirements

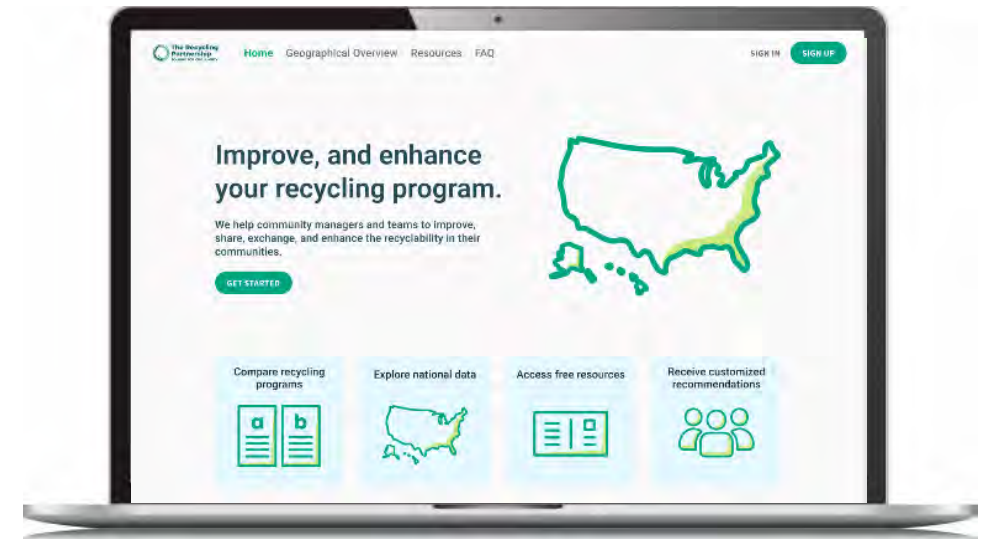
Introducing the Recycling Program Solutions Hub





The Recycling Program Solutions Hub is an open-access, **free tool** for recycling program leaders to **access, track & verify** critical recycling program data, including accepted materials and program impacts.

Centered around **connectivity** and **actionable suggestions**; users have a first-hand opportunity to co-create a **stronger system**.

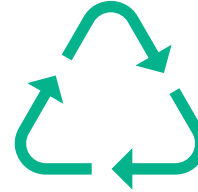


Key Features

- Interactive Map
- Custom Recommendations
- Learning Hub & Resources
- Peer-to-Peer Networking



Plastic packaging rates can be improved and can be expected to improve, in particular because of policy



Consumers can be confident that what they put in their bin is **recycled** in the full sense



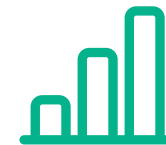
Non-recyclable plastics will decline; recyclables will increase



We have a domestic industry that is hungry for more plastics



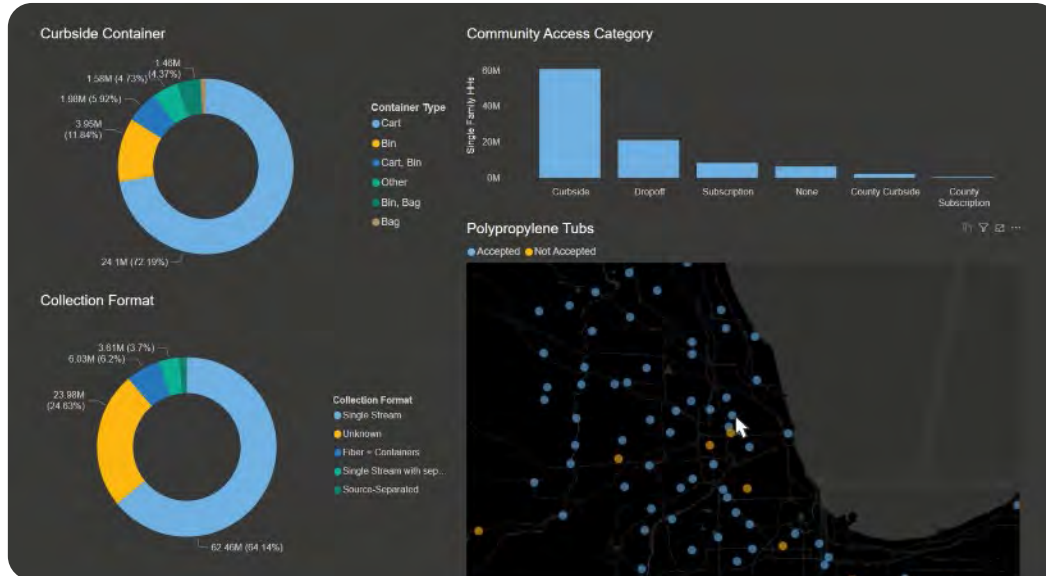
Data has enabled states to set clearly defined targets and goals to drive meaningful progress towards a higher performing system



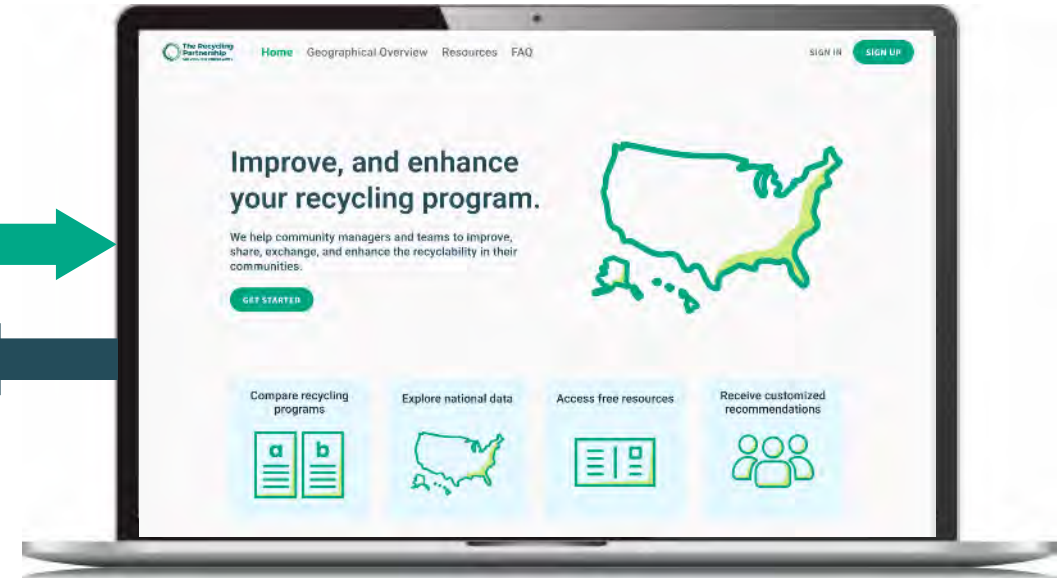
While we could always use better data – we know what it takes to improve the system



National Recycling Database



Solutions Hub



The **National Recycling Database** is the underlying structure for the **Hub**, but it also becomes **more accurate and thorough** as recycling staff use the Hub.

Imagine A World Where Programs Decide What Labels Tell Residents (in Real Time)

Through our National Database, This is a Reality.

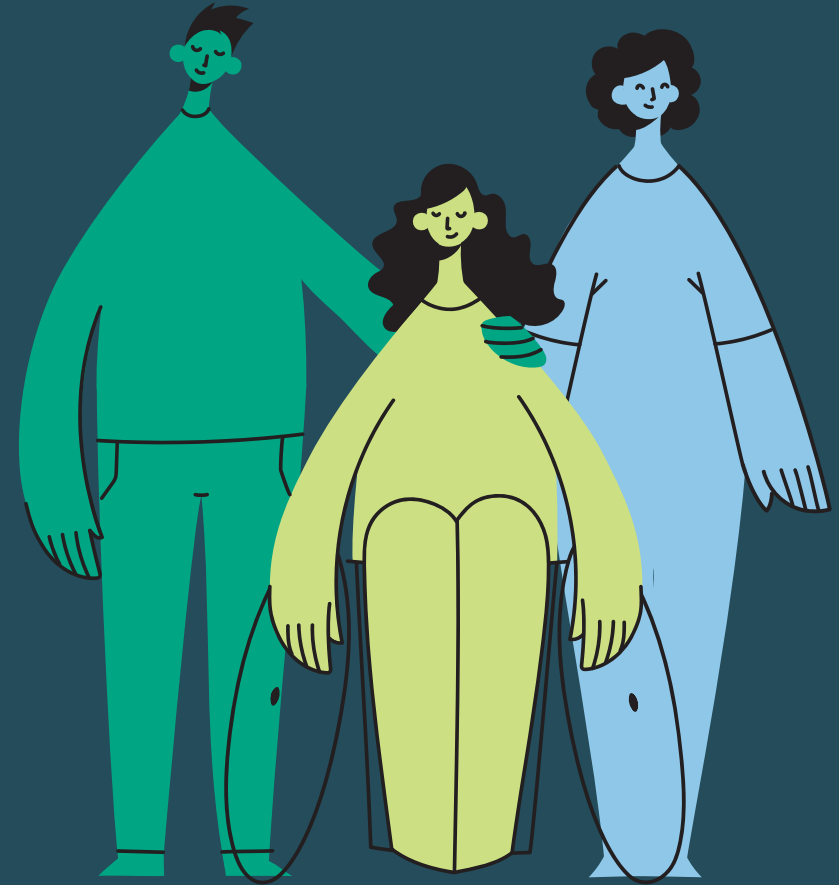




**Is this accepted
for recycling
where you live?**



Key Features of the Recycling Program Solutions Hub



Recycling Program Solutions Hub: Interactive Map



View MRFs

View accessibility to recycling on the national and local level

Explore all recycling programs in the country

Explore U.S. Recycling Data

There are more than 9,000 recycling programs in the United States. Click on the map below to learn more about recycling access and infrastructure across the country.

SEARCH

Search for a specific program, municipality, county, or state

Show Material Recovery Facilities (MRFs) Only show communities with a recycling program

West Virginia - access: 22%

CURBSIDE PERCENTAGE 0% 100%



Anyone in the public can view basic information about any community in the U.S.

- Type of recycling program offered

- Materials accepted in the program

Recycling program staff can view contact information and talking points to connect with peers

Improve Recycling in Your Community
 United States / South Carolina / Barnwell County / Solid Waste Management & Recycling Barnwell County

Solid Waste Management & Recycling Barnwell County
 Last update: 04/11/2022

General information

Population Fewer than 15,000 residents	MRF MRF Name	Program Type Dropoff
Collection Format Single Stream	Multifamily N/A	Container N/A

Key Recycling Metrics

Recycling Participation 47% of all residents (12/2021)	Tons Recycled 23,287 tons
Inbound Contam. Rate 23% of all residents (12/2021)	GHG Savings 87.6 metric tons of CO2 avoided

Contact

Community Manager Marc Blackwood Community Manager marc.blackwood@barnwellcounty.com (803) 233-3333	Let's talk about Increasing Participation Negotiating new MRF Contracts
--	--

Accepted Materials

- Metal**
 - Aluminum Beverage Cans
 - Aluminum Foil
 - Aluminum Plates / Trays
 - Metal Aerosols
 - Other Aluminum Cans
 - Other Small Scrap Metal
 - Pots & Pans
 - Steel Aerosol Containers
 - Steel Lids
 - Steel / Tin / Bimetal Cans
- Glass**
 - Brown Glass Bottles & Jars
 - Clear Glass Bottles & Jars
 - Glass Bottles & Jars
 - Green Glass Bottles & Jars
- Paper**
 - Corrugated Cardboard
 - Magazines
 - Mail
 - Mixed Paper
 - Molded Fiber
 - Non-Foodservice Packaging
 - Newspaper
 - Office Paper
 - Paper Bags
 - Paperback Books
 - Paperboard
 - Phone Books
 - Pizza Boxes
 - Wrapping Paper
- Plastic**
 - HDPE Bottles, Jugs, Jars, Cups, Lids, Trays & Tubs
 - LDPE Bottles, Jugs, Jars, Lids, Tubs, Cups & Trays
 - Other Plastic Bottles, Jugs & Jars
 - PET Bottles, Jugs, Jars, Clamshells, Cups, Lids, Trays & Tubs
 - Plastic Bottles, Jugs, Jars, Clamshells, Containers, Cups, Lids & Tubs



Program staff will enter information about their community that inform the quality of their recycling program.

The more information that is provided, the more customized the Recommendations section becomes.

“Similar Communities” will also be available, allowing program staff to find peers with similar programs anywhere in the U.S.

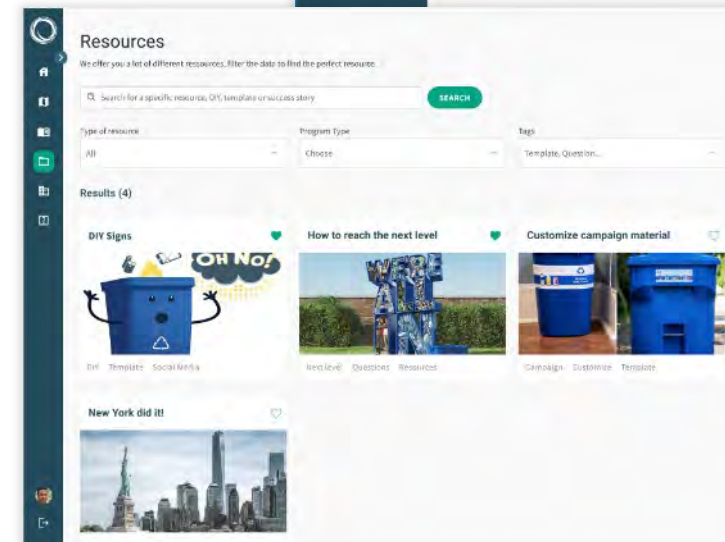
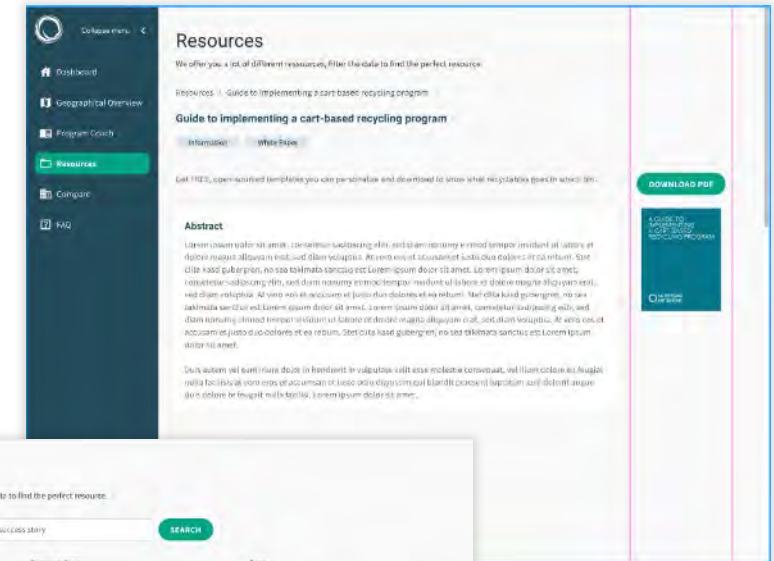
The screenshot displays the 'Allendale County' recommendations page. At the top, it states: 'Your community's [single-family recycling program] serves 50k residents. It collects [every other week] using [a curbside bin] and successfully collects an average of [350 pounds] per household per year.' Below this is a 'Demographic data' section with four metrics: Renting (100%), Median income (54,000 \$), Bachelor's degree or higher (77.3%), and BIPOC (100%). Each metric includes a small text box with comparative data. The 'Your impact' section shows three metrics: 154 tons of trash saved per year, 337 metric tons of CO2 avoided per year, and 794,119 gallons of water saved per year. There are two sections for adding recommendations: 'Add a new material to the program' and 'Increase recycling participation', each with a list of checkboxes and a 'Recommendation Number' field. At the bottom, the 'Similar communities' section lists three nearby counties: Orangeburg County (Georgia), Allendale County (Georgia), and Burke County (Georgia), each with distance, recycling program type, and city type.



Each Recommendation is linked to a Resource that has been crafted by the Recycling Partnership. These include our most popular toolkits and guides:

- DIY Signs
- Start at the Cart
- MRF Contract Guide
- And more!

Resources are publicly available and searchable without a login.





The Recycling Partnership is hosting virtual walkthroughs with local recycling coordinators to create their accounts and get started in the Hub, access expert-led video courses, receive customized recommendations on how to improve your recycling program and connect with your peers.

Get in Touch:

Kevin Goolsby

 SolutionsHub@recyclingpartnership.org

 RecyclingPartnership.org



We mobilize people, data, and solutions across the value chain to reduce waste and our impact on the environment while also unlocking economic benefits.